

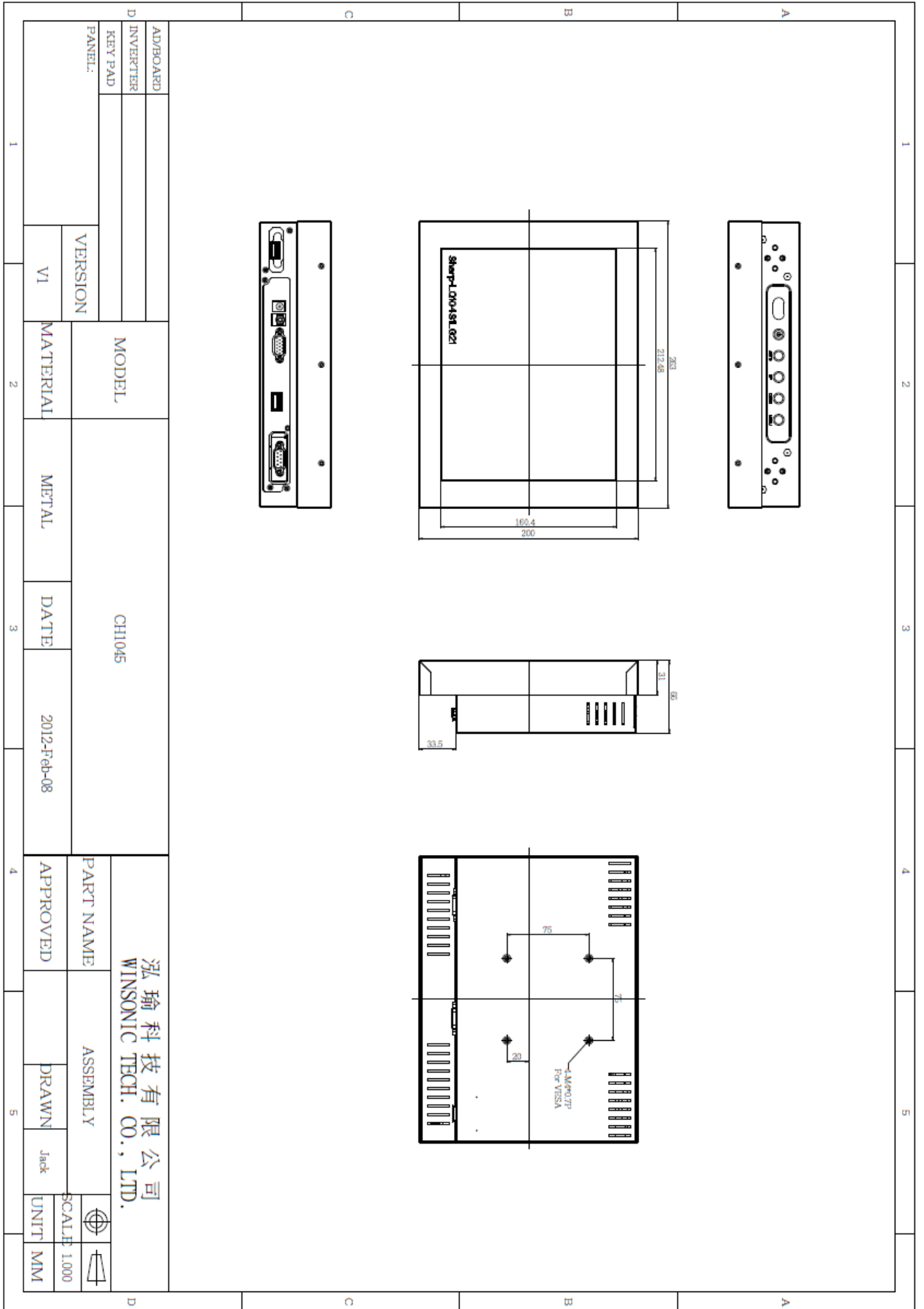
CH1045

Chassis Type Monitor 10,4"

- **Modular mechanical design provides flexible product configuration and easy maintenance**
- **Optional built-in touch screen for interactive applications**
- **Optional auto-brightness sensor offers application by day and night**
- **Optional with different frames (Open Frame, Chassis Mount, Rack Mount, Panel Mount)**



Specifications			
Panel:	Cell Type / Glass Surface	TFT LCD / Black Anti-Glare, low reflection coating	
	Aspect Ratio / Size	4:3 / 10.4" viewable diagonal area	
	Native Res. / Colors	CH1045-SN35L0 800 (H) x 600 (V) / 262 K	CH1045-XN35L0 1024 (H) x 768 (V) / 16.2 M
	Active Area / Pixel Pitch mm	211.2 (H) x 158.4 (V) / 0.264(H) x 0.264(V)	210.4 (H) x 157.8 (V) / 0.2055(H) x 0.2055(V)
	Response Time	< 35 ms	<25 ms
	Brightness / Contrast	350 cd/m2 (typ) / 600:1	350 cd/m2 (typ) / 600:1
	Viewing Angle	H. 140° (-70° ~ + 70°) V. 120° (-60° ~+ 60°)	H. 160° (-80° ~ + 80°) V. 140° (-70° ~ + 70°)
	Light Source	LED, Long Life 35.000 hrs (typ)	
Input Sources:	Audio System	2W Amplifier	
Input Terminals:	1 x VGA (15 Pin Female D-SUB) 1x PC Audio (Stereo headphone Jack) 1 x DC Power Plug		
Convenient Features:	Auto Calibration, Back Light Adjustment, Plug & Play (VESA DDC/CI, DDC 2B) OSD Multi Languages, Wall Mount Ready (VESA 75 x 75 mm)		
Power:	12V DC in. External AC-to-12VDC power adapter with universal / Auto-Sensing, AC 90 to 260 V, 50 / 60 Hz		
Power cons.	Operation / Power	10 watt, < 2 watt (Support DPMS)	18 watt, < 2 watt (Support DPMS)
	Operating:	Temperature / Humidity 0°C ~ 50°C, 10% ~ 90% (no condensation)	
Storage:	Temperature / Humidity -20°C ~ 60°C, 10% ~ 90% (no condensation)		
Dimensions:	Physical	WxHxD = 263 x 212 x 65 (mm)	
	Carton	WxHxD = TBD	
Weight:	N.W. / G.W	3.5 kg / 4.5 kg	
Options:	Touch	Enhanced Panel	Others
	Resistive Touch Capacitive Touch SAW Touch Infrared Touch	High Brightness Wide Temperature Sunlight Readable Protection Glass	Digital Signage Motion Sensor Light Sensor Auto-Dimming SV+AV, DVI, HDMI



AD/BOARD		MODEL		CH1045		PART NAME		泓瑜科技有限公司 WINSONIC TECH. CO., LTD.	
INVERTER		MATERIAL		DATE	2012-Feb-08	ASSEMBLY			
KEY PAD		METAL		DATE	2012-Feb-08	DRAWN		Jack	
PANEL:		VERSION		DATE	2012-Feb-08	Jack		SCALF 1.000	
		VI		DATE	2012-Feb-08	UNIT		MM	