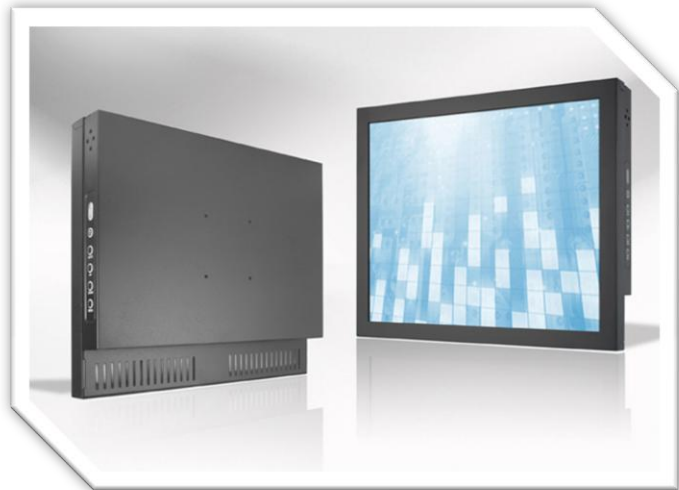


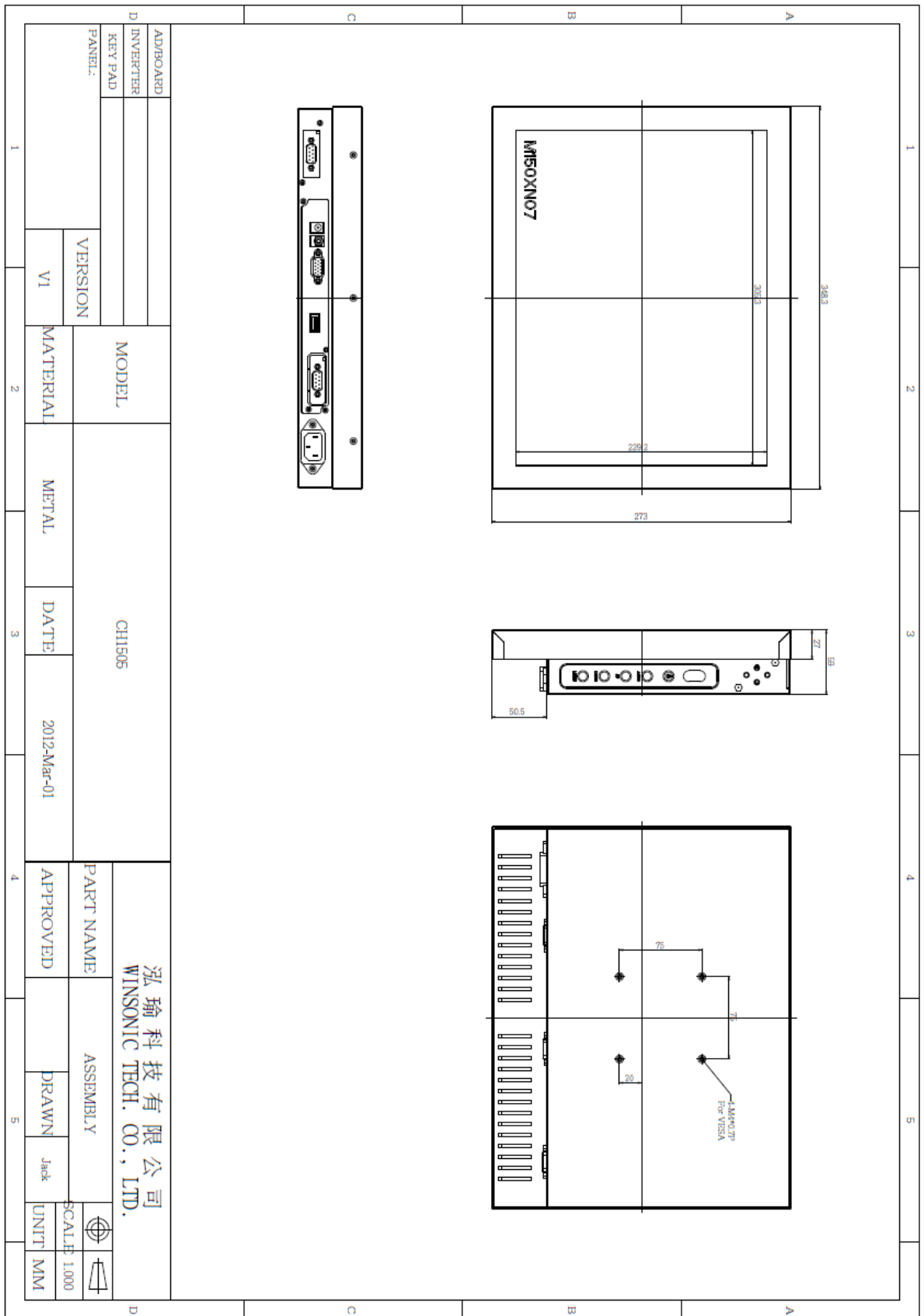
## CH1505 Chassis Monitor/Touchmonitor

- Modular mechanical design provides flexible product configuration and easy maintenance
- Optional built-in touch screen for interactive applications
- Optional auto-brightness sensor offers application by day and night
- Optional with different frames (Open Frame, Chassis Mount, Panel Mount, Rack Mount)



### Specifications

<b>Panel:</b>	Cell Type / Glass Surface	TFT LCD / Black Anti-Glare, low reflection coating	
	Aspect Ratio / Size	4:3 / 15" viewable diagonal area	
	Active Area / Pixel Pitch	304.12 (H) x 228.10.5 (V) / 0.297 (H) x 0.297 (V) mm	
	Native Res. / Colors	1024 (H) x 768 (V) / 16.2 M	
	Brightness / Contrast	250 cd/m2 (typ) / 700:1	
	Response Time	< 35 ms	
	Viewing Angle	H. 140° (-70° ~ + 70°), V. 120° (-60° ~+ 60°)	
	Light Source	LED, Long Life 35.000 hrs (typ)	
<b>Input Sources:</b>	Audio System	N/A	
<b>Input Terminals:</b>	1 x VGA (15 Pin Female D-SUB) 1x PC Audio (Stereo headphone Jack) 1 x DC Power Plug		
<b>Convenient Features:</b>	Auto Calibration, Back Light Adjustment, Plug & Play (VESA DDC/CI, DDC 2B) OSD Multi Languages, Wall Mount Ready (VESA 75 x 75 mm)		
<b>Power:</b>	Internal power supply with universal / Auto-Sensing, AC 90 to 260 V, 50 / 60 Hz		
<b>Power cons.</b>	Operation / Power	20 watt, < 2 watt (Support DPMS)	
<b>Operating:</b>	Temperature / Humidity	0°C ~ 50°C, 10% ~ 90% (no condensation)	
<b>Storage:</b>	Temperature / Humidity	-20°C ~ 60°C, 10% ~ 90% (no condensation)	
<b>Dimensions:</b>	Physical	WxHxD = 348,3 x 273 x 59 (mm)	
	Carton	WxHxD = 419 x 380 x 142 (mm)	
<b>Weight:</b>	N.W. / G.W	4 kg / 5 kg	
<b>Options:</b>	<b>Touch</b>	<b>Enhanced Panel</b>	<b>Others</b>
	Resistive Touch Capacitive Touch SAW Touch Infrared Touch	High Brightness Wide Temperature Sunlight Readable Protection Glass	Digital Signage Motion Sensor Light Sensor Auto-Dimming SV+AV, DVI, HDMI



AD/BOARD		MODEL		CHI505		PART NAME		泓瑜 科技有限公司 WINSONIC TECH. CO., LTD.	
INVERTER						ASSEMBLY			
KEY PAD						DRAWN		Jack	
PANEL:		VERSION		DATE		APPROVED		UNIT	
		VI		2012-Mar-01				SCALE 1:1000	
		MATERIAL		METAL				MM	