

CH12W5 Chassis-Type 12" Monitor 1280x800

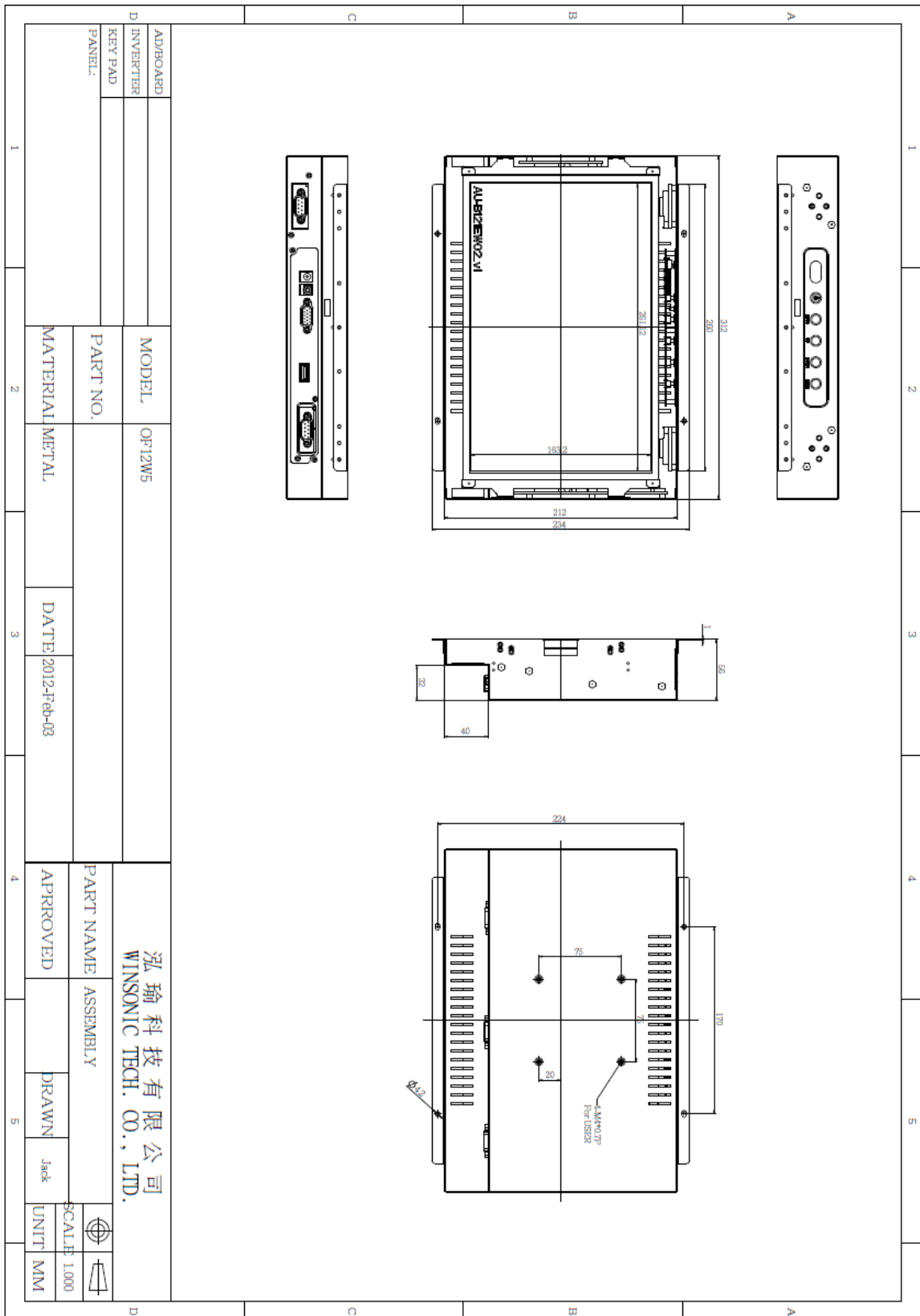
- **Modular mechanical design provides flexible product configuration and easy maintenance**
- **Optional built-in touch screen for interactive applications**
- **Optional auto-brightness sensor offers application by day and night**
- **Optional with different frames (Open Frame, Chassis Mount, Rack Mount, Panel Mount)**



Specifications

Panel:	Cell Type / Glass Surface	TFT LCD / Black Anti-Glare, low reflection coating	
	Aspect Ratio / Size	Wide / 12,1" viewable diagonal area	
	Active Area / Pixel Pitch	261.1 (H) x 163.2 (V) / 0.204 (H) x 0.204 (V) mm	
	Native Res. / Colors	1280 (H) x 800 (V) / 262 K	
	Brightness / Contrast	400 cd/m2 (typ) / 1000:1	
	Response Time	< 25 ms	
	Viewing Angle	H. 176° (-88° ~ + 88°), V. 176° (-88° ~+ 88°)	
	Light Source	LED, Long Life 35.000 hrs (typ)	
Input Sources:	Audio System	2W Speaker x 2	
Input Terminals:	1 x VGA (15 Pin Female D-SUB) 1x PC Audio (Stereo headphone Jack) 1 x DC Power Plug		
Convenient Features:	Auto Calibration, Back Light Adjustment, Plug & Play (VESA DDC/CI, DDC 2B) OSD Multi Languages, Wall Mount Ready (VESA 75 x 75 mm)		
Power:	External AC-to-12VDC power adapter with universal / Auto-Sensing, AC 90 to 260 V, 50 / 60 Hz		
Power cons.	Operation / Power	10 watt, < 1 watt (Support DPMS)	
Operating:	Temperature / Humidity	-15°C ~ 70°C / 10% ~ 90% (no condensation)	
Storage:	Temperature / Humidity	-30°C ~ 80°C / 10% ~ 90% (no condensation)	
Dimensions:	Physical	WxHxD = see drawing	
	Carton	WxHxD = TBD	
Weight:	N.W. / G.W	4.5 kg / 5.5 kg	
Options:	Touch	Enhanced Panel	Others
	Resistive Touch Capacitive Touch SAW Touch Infrared Touch	Protection Glass High Brightness Wide Temperature Sunlight Readable	Digital Signage Motion Sensor Light Sensor Auto-Dimming SV+AV, DVI, HDMI

Errors and omissions excepted



Full size drawing available on request!