

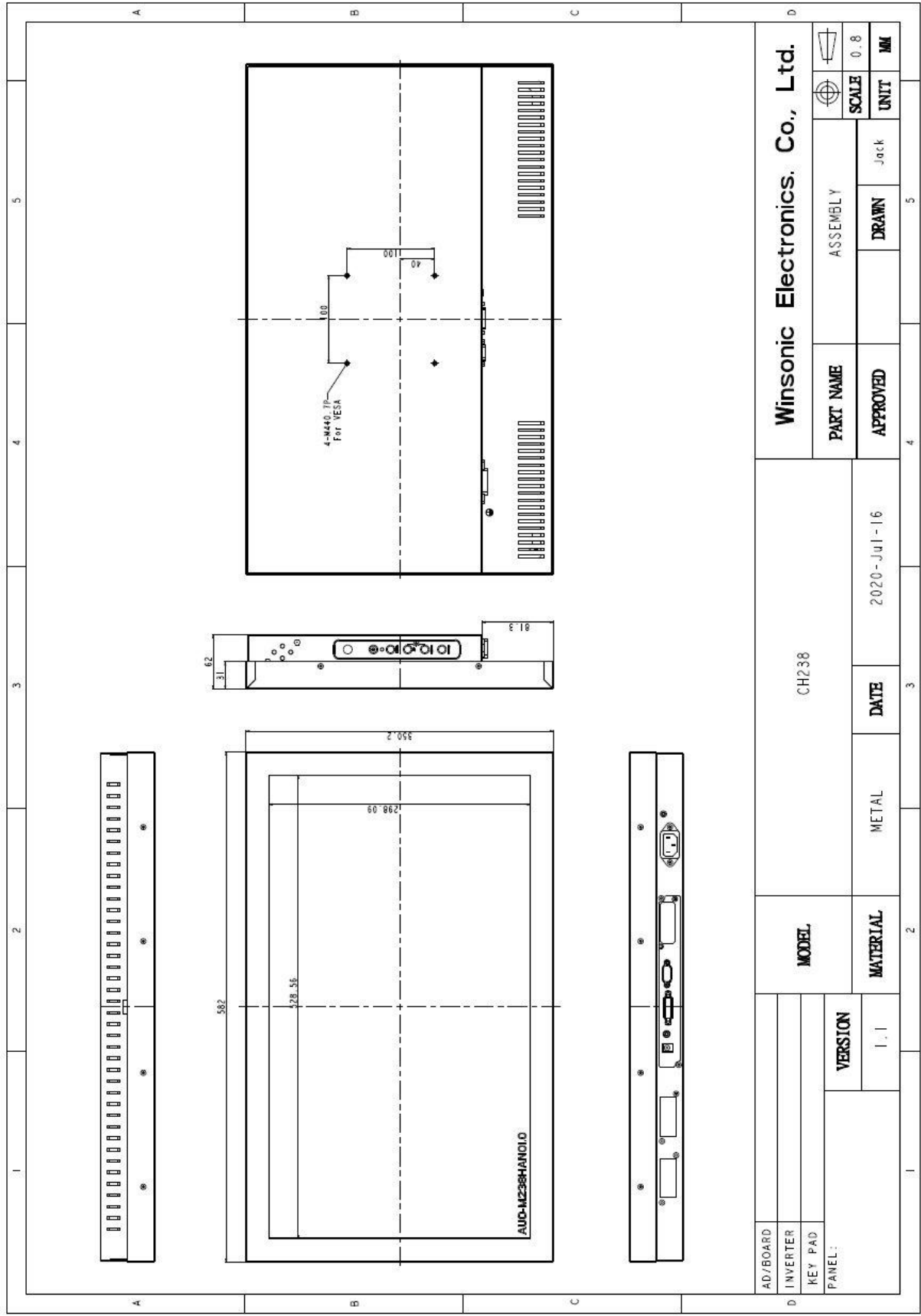
## CH2385 Chassis 23,8" Monitor 1920x1080

- **Modular mechanical design provides flexible product configuration and easy maintenance**
- **Optional built-in touch screen for interactive applications**
- **Optional auto-brightness sensor offers application by day and night**
- **Optional with different frames (Open Frame, Chassis Mount, Rack Mount, Panel Mount etc.)**



Specifications			
<b>Panel:</b>	Cell Type / Glass Surface	TFT LCD / Black Anti-Glare, low reflection coating	
	Aspect Ratio / Size	Wide / 23.8" viewable diagonal area	
	Active Area / Pixel Pitch	527.04 (H) x 296.46 (V) / 0.2745 (H) x 0.2745 (V) mm	
	Native Res. / Colors	1920 (H) x 1080 (V) / 16.7M	
	Brightness / Contrast	250 cd/m2 (typ) / 3.000:1	
	Response Time	< 16 ms	
	Viewing Angle	Horiz. 178° (-89° ~ + 89°), Vert. 178° (-89° ~ + 89°)	
	Light Source	N/A	
<b>Input Sources:</b>	Audio System	2W Speaker x 2	
<b>Input Terminals:</b>	1 x VGA (15 Pin Female D-SUB) 1x PC Audio (Stereo headphone Jack) 1 x DC Power Plug		
<b>Convenient Features:</b>	Auto Calibration, Back Light Adjustment, Plug & Play (VESA DDC/CI, DDC 2B) OSD Multi Languages, Wall Mount Ready (VESA 75 x 75 mm)		
<b>Power:</b>	Internal power supply with universal / Auto-Sensing, AC 90 to 260 V, 50 / 60 Hz		
<b>Power cons.</b>	Operation / Power	13.4 watt, < 1 watt (Support DPMS)	
<b>Operating:</b>	Temperature / Humidity	0°C ~ 50°C / 10% ~ 90% (no condensation)	
<b>Storage:</b>	Temperature / Humidity	-20°C ~ 60°C / 10% ~ 90% (no condensation)	
<b>Dimensions:</b>	Physical	WxHxD = see drawing	
	Carton	WxHxD = TBD	
<b>Weight:</b>	N.W. / G.W	12 kg / 13.5 kg	
<b>Options:</b>	<b>Touch</b>	<b>Enhanced Panel</b>	<b>Others</b>
	Resistive Touch Capacitive Touch SAW Touch Infrared Touch	Protection Glass High Brightness Wide Temperature Sunlight Readable	Digital Signage Motion Sensor Light Sensor Auto-Dimming SV+AV, DVI, HDMI

Errors and omissions excepted



Full size drawing available on request!