

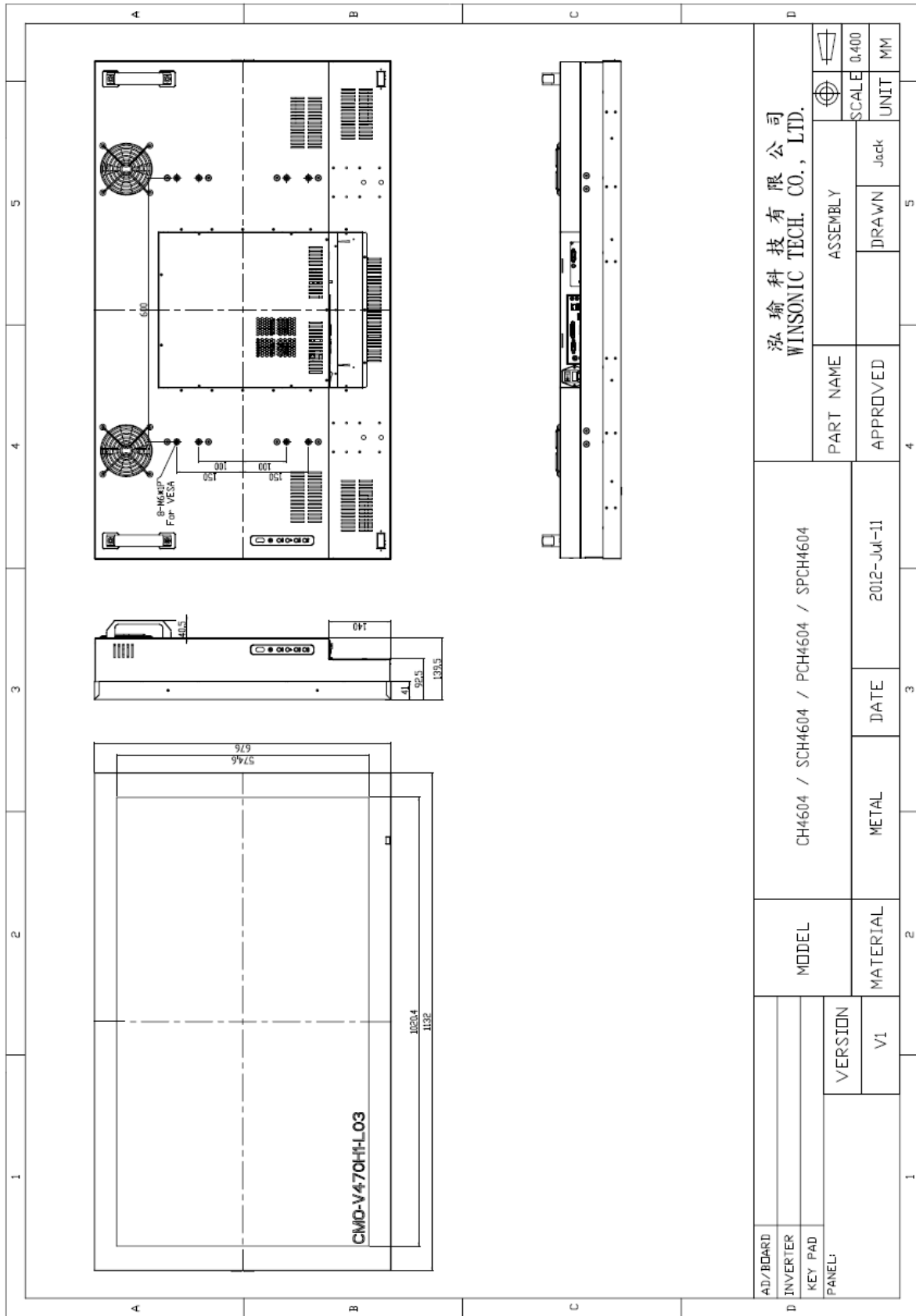
## CH4604 Chassis Monitor 1920 x 1080

- Built-in fans to improve system cooling allows up to 24-hours a day usage
- Optional built-in touch screen for interactive applications
- Optional auto-brightness sensor offers application by day and night
- Optional with different frames (Open Frame, Panel Mount, Rack Mount etc)



Specifications			
<b>Panel:</b>	Cell Type / Glass Surface	TFT LCD / Black Anti-Glare, low reflection coating	
	Aspect Ratio / Size	Wide / 46" viewable diagonal area	
	Active Area / Pixel Pitch	1018.08(H) x 572.67(V) / 0.53(H) x 0.53(V) mm	
	Native Res. / Colors	1920(H) x 1080 (V) / 16.7 Million	
	Brightness / Contrast	350 cd/m2 (standard) / 3000:1	
	Response Time	<8ms	
	Viewing Angle	H. 178° (-89° ~ + 89°), V. 178° (-89° ~+ 89°)	
	Light Source	LED, Long Life 35.000 hrs (typ)	
<b>Input Sources:</b>	Audio System	Speakers x 2	
<b>Input Terminals:</b>	1 x VGA (15 Pin Female D-SUB) 1x PC Audio (Stereo headphone Jack) 1 x DC Power Plug		
<b>Convenient Features:</b>	Auto Calibration, Back Light Adjustment, Plug & Play (VESA DDC/CI, DDC 2B) OSD Multi Languages, Wall Mount Ready (VESA 600 x 200 mm )		
<b>Power:</b>	Internal power supply with universal / Auto-Sensing, AC 90 to260 V, 50 / 60 Hz		
<b>Power cons.:</b>	Operation / Power	117 watt, <1 watt (Support DPMS)	
<b>Operating:</b>	Temperature / Humidity	0°C ~ 50°C, 10% ~ 90% (no condensation)	
<b>Storage:</b>	Temperature / Humidity	-20°C ~ 60°C, 10% ~ 90% (no condensation)	
<b>Dimensions:</b>	Physical	WxHxD = please refer to drawing	
	Carton	WxHxD = TBD	
<b>Weight:</b>	N.W. / G.W	38 kg / 41 kg	
<b>Options:</b>	<b>Touch</b>	<b>Enhanced Panel</b>	<b>Others</b>
	SAW Touch Infrared Touch	Protection Glass High Brightness Wide Temperature Sunlight Readable	Digital Signage Motion Sensor Light Sensor Auto-Dimming SV+AV, DVI, HDMI etc

Errors and omissions excepted !



Full-size drawing available on request!