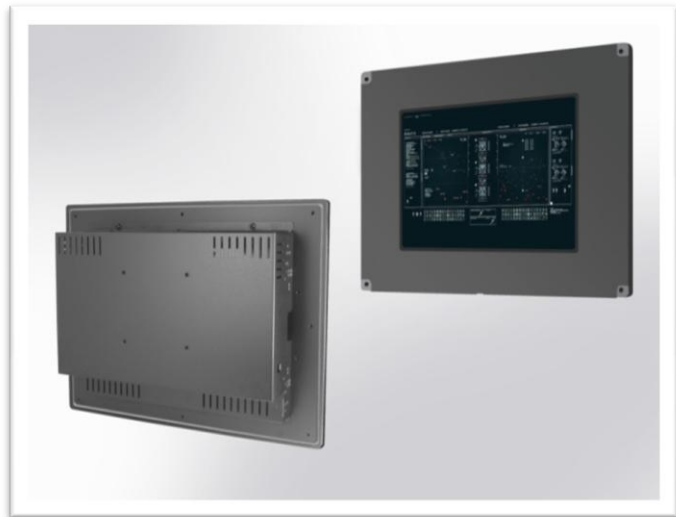


## FM1205 Flush-Mount 12" Monitor 800x600

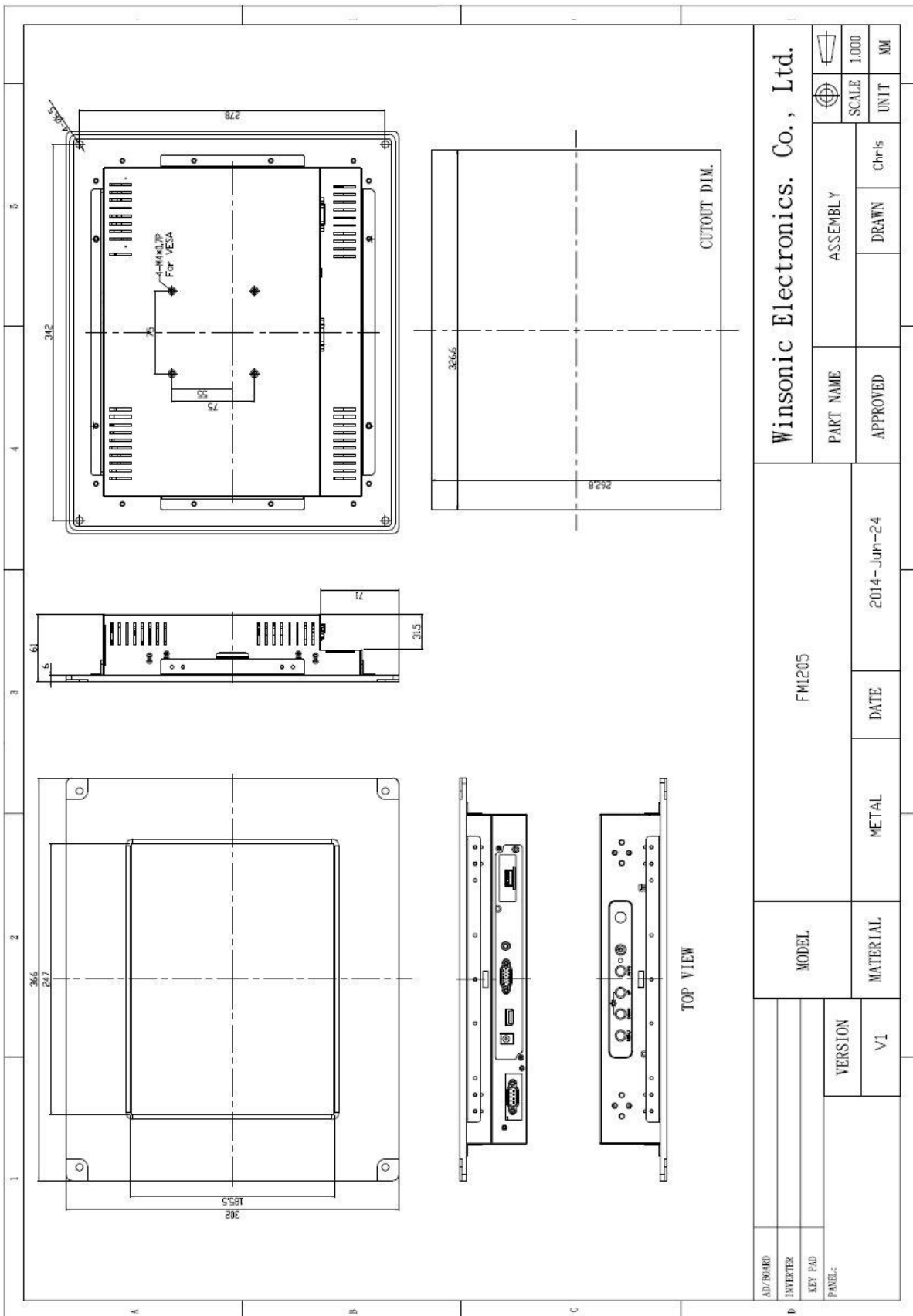
- **Modular mechanical design provides flexible product configuration and easy maintenance**
- **Optional built-in touch screen for interactive applications**
- **Optional auto-brightness sensor offers application by day and night**
- **Optional with different frames (Chassis Type, Chassis Mount, Open Frame, Rack Mount etc.)**



### Specifications

|                             |   |  |   |
|-----------------------------|---|--|---|
| <b>Panel:</b>               | Cell Type / Glass Surface   | TFT LCD / Black Anti-Glare, low reflection coating                           |   |
|                             | Aspect Ratio / Size   | 4:3 / 12.1" viewable diagonal area   |   |
|                             | Active Area / Pixel Pitch   | 246.0 (H) x 184.5 (V) / 0.307 (H) x 0.307 (V) mm                             |   |
|                             | Native Res. / Colors  | 800 (H) x 600 (V) / 262 K  |   |
|                             | Brightness / Contrast   | 250 cd/m2 (typ) / 600:1  |   |
|                             | Response Time   | < 35 ms  |   |
|                             | Viewing Angle   | Horiz. 140° (-70° ~ + 70°), Vert. 120° (-60° ~+ 60°)                         |   |
|                             | Light Source  | LED, Long Life 35.000 hrs (typ)  |   |
| <b>Input Sources:</b>       | Audio System  | 2W speaker x 2   |   |
| <b>Input Terminals:</b>     | 1 x VGA (15 Pin Female D-SUB) 1x PC Audio (Stereo headphone Jack) 1 x DC Power Plug                                     |  |   |
| <b>Convenient Features:</b> | Auto Calibration, Back Light Adjustment, Plug & Play (VESA DDC/CI, DDC 2B) OSD Multi Languages, Wall Mount Ready (VESA) |  |   |
| <b>Power:</b>               | 12V DC in   | Adapter with universal / Auto-Sensing, AC 90 to 260 V, 50 / 60 Hz            |   |
| <b>Power cons.</b>          | Operation / Power   | 22 watt, < 2 watt (Support DPMS)   |   |
| <b>Operating:</b>           | Temperature / Humidity  | 0°C ~ 50°C, 10% ~ 90% (no condensation)                                      |   |
| <b>Storage:</b>             | Temperature / Humidity  | -20°C ~ 60°C, 10% ~ 90% (no condensation)                                    |   |
| <b>Dimensions:</b>          | Physical  | See drawing  |   |
|                             | Carton  | TBA  |   |
| <b>Weight:</b>              | N.W. / G.W  | 3.5 kg / 4.5 kg  |   |
| <b>Options:</b>             | <b>Touch</b>  | <b>Enhanced Panel</b>  | <b>Others</b>   |
|                             | Resistive Touch<br>Capacitive Touch<br>SAW Touch<br>Infrared Touch  | High Brightness<br>Wide Temperature<br>Sunlight Readable<br>Protection Glass | Digital Signage<br>Motion Sensor<br>Light Sensor<br>Auto-Dimming<br>SV+AV, DVI, HDMI,DP |

Errors and omissions excluded



|                                 |  |          |  |        |  |           |  |             |  |        |  |       |  |
|---------------------------------|--|----------|--|--------|--|-----------|--|-------------|--|--------|--|-------|--|
| AD/BOARD                        |  | MODEL    |  | FML205 |  | PART NAME |  | ASSEMBLY    |  | SCALE  |  | 1.000 |  |
| INVERTER                        |  | MATERIAL |  | METAL  |  | DATE      |  | 2014-Jun-24 |  | UNIT   |  | MM    |  |
| KEY FAD                         |  | VERSION  |  | V1     |  | APPROVED  |  | DRAWN       |  | Chr-Is |  |       |  |
| FRAME:                          |  |          |  |        |  |           |  |             |  |        |  |       |  |
| Winsonic Electronics. Co., Ltd. |  |          |  |        |  |           |  |             |  |        |  |       |  |

Full size drawing available on request