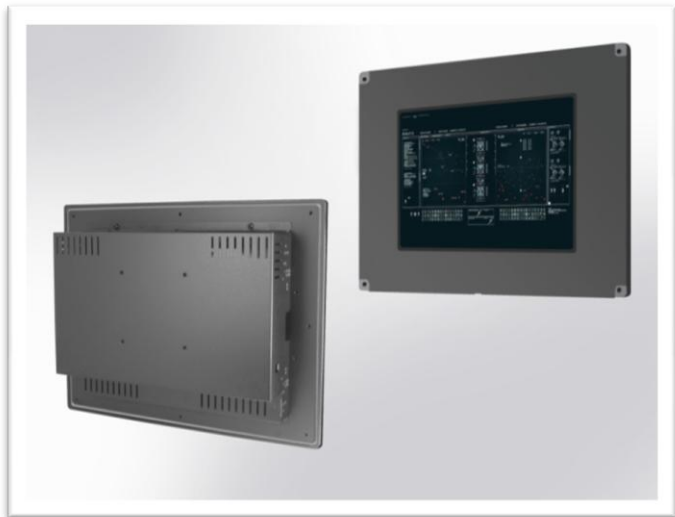


FM1205 Flush-Mount 12" Monitor 1024x768

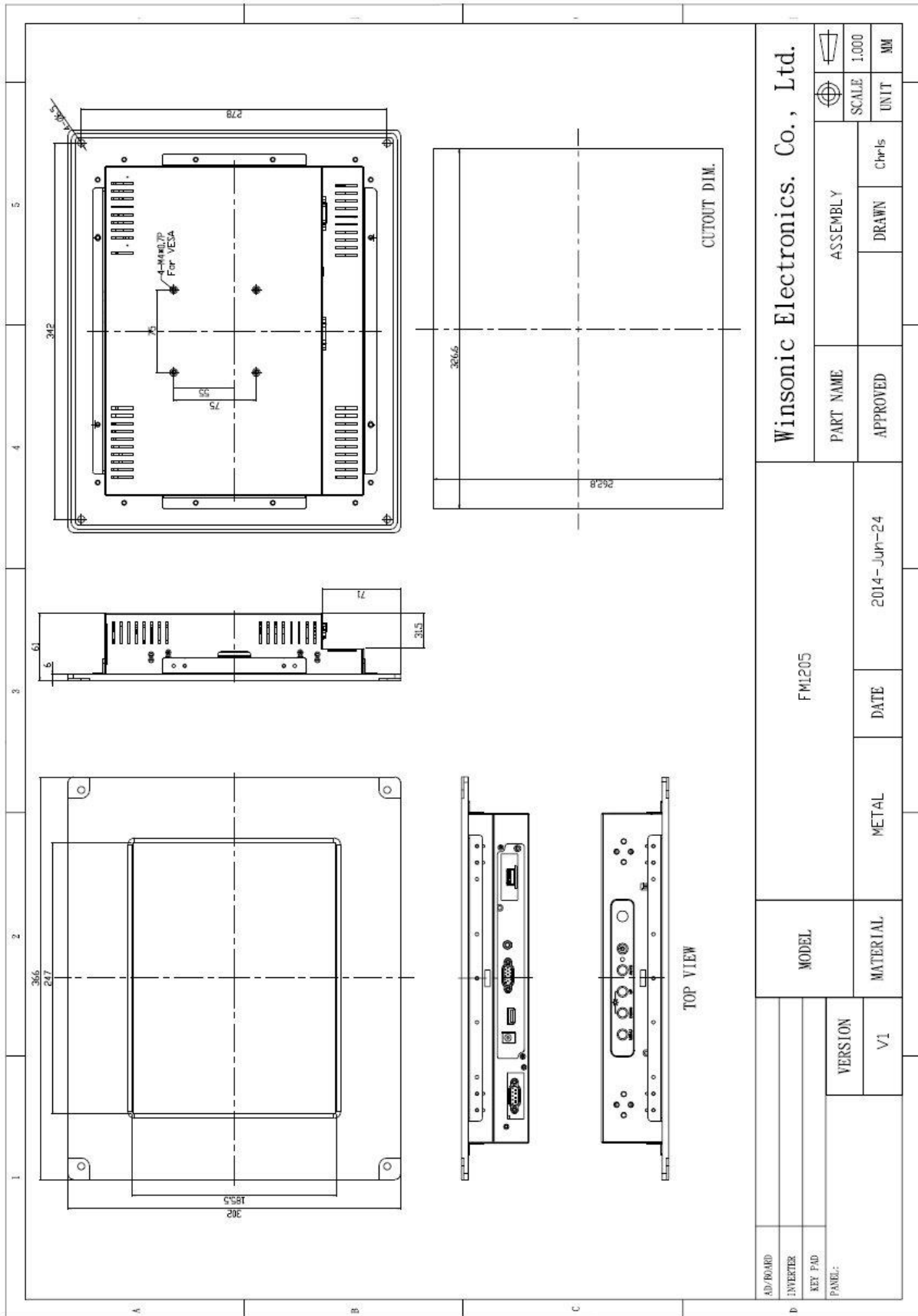
- **Modular mechanical design provides flexible product configuration and easy maintenance**
- **Optional built-in touch screen for interactive applications**
- **Optional auto-brightness sensor offers application by day and night**
- **Optional with different frames (Chassis Type, Chassis Mount, Open Frame, Rack Mount etc.)**



Specifications

Panel:	Cell Type / Glass Surface	TFT LCD / Black Anti-Glare, low reflection coating	
	Aspect Ratio / Size	4:3 / 12.1" viewable diagonal area	
	Active Area / Pixel Pitch	245.8 (H) x 184.3 (V) / 0.24 (H) x 0.24 (V) mm	
	Native Res. / Colors	1024 (H) x 768 (V) / 16.2 M	
	Brightness / Contrast	350 cd/m ² (typ) / 550:1	
	Response Time	< 25 ms	
	Viewing Angle	Horiz. 160° (-80° ~ + 80°), Vert. 140° (-70° ~+ 70°)	
	Light Source	LED, Long Life 35.000 hrs (typ)	
Input Sources:	Audio System	2W speaker x 2	
Input Terminals:	1 x VGA (15 Pin Female D-SUB) 1x PC Audio (Stereo headphone Jack) 1 x DC Power Plug		
Convenient Features:	Auto Calibration, Back Light Adjustment, Plug & Play (VESA DDC/CI, DDC 2B) OSD Multi Languages, Wall Mount Ready (VESA)		
Power:	12V DC in	Adapter with universal / Auto-Sensing, AC 90 to 260 V, 50 / 60 Hz	
Power cons.	Operation / Power	24 watt, < 2 watt (Support DPMS)	
Operating:	Temperature / Humidity	0°C ~ 50°C, 10% ~ 90% (no condensation)	
Storage:	Temperature / Humidity	-20°C ~ 60°C, 10% ~ 90% (no condensation)	
Dimensions:	Physical	See drawing	
	Carton	TBA	
Weight:	N.W. / G.W	3.5 kg / 4.5 kg	
Options:	Touch	Enhanced Panel	Others
	Resistive Touch Capacitive Touch SAW Touch Infrared Touch	High Brightness Wide Temperature Sunlight Readable Protection Glass	Digital Signage Motion Sensor Light Sensor Auto-Dimming SV+AV, DVI, HDMI,DP

Errors and omissions excluded



Full size drawing available on request