

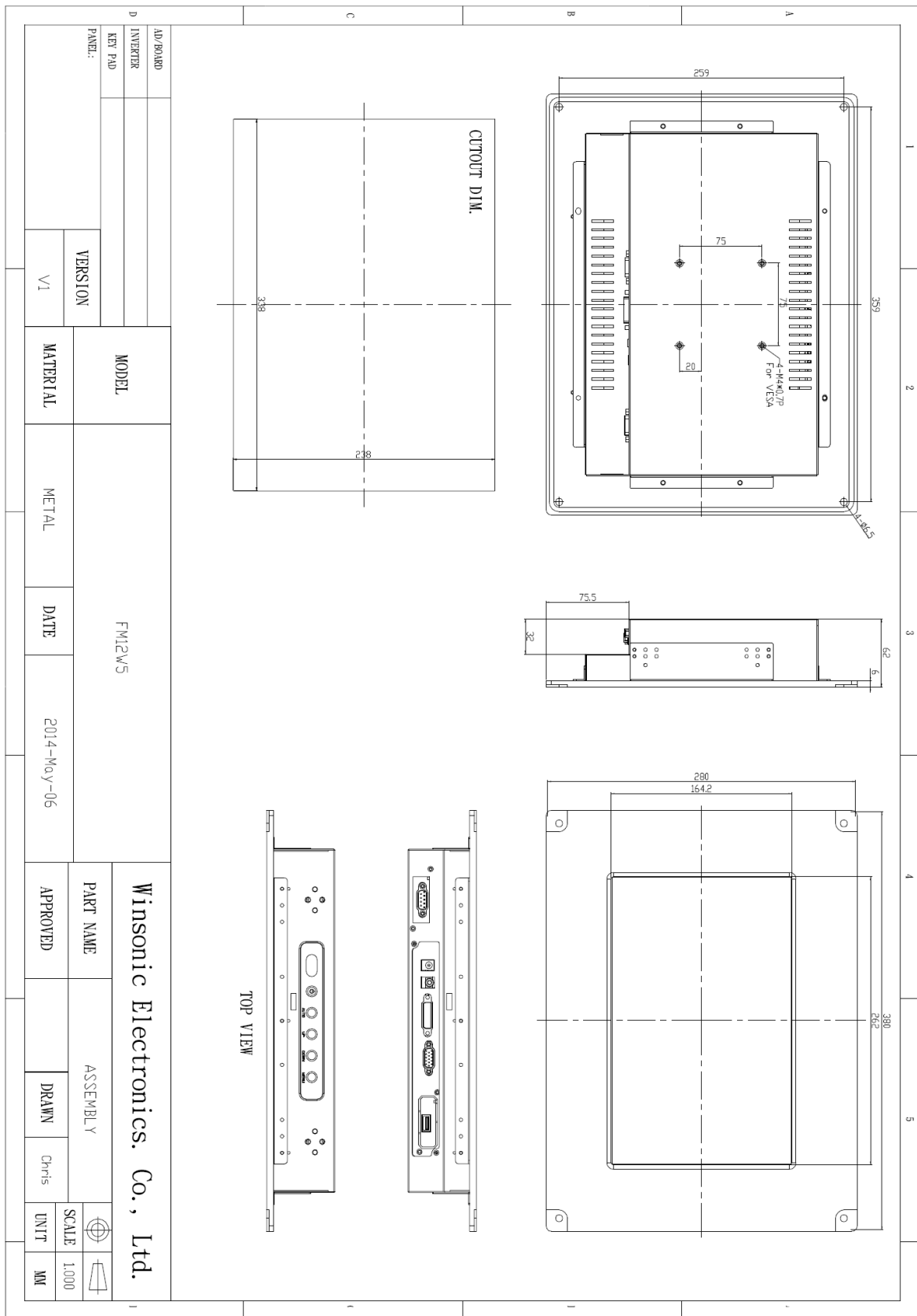
## FM12W5 Flush Mount 12" Monitor 1280x800

- **Modular mechanical design provides flexible product configuration and easy maintenance**
- **Optional built-in touch screen for interactive applications**
- **Optional auto-brightness sensor offers application by day and night**
- **Optional with different frames (Open Frame, Chassis Mount, Rack Mount, Chassis Type etc.)**



Specifications		
<b>Panel:</b>	Cell Type / Glass Surface	TFT LCD / Black Anti-Glare, low reflection coating
	Aspect Ratio / Size	Wide / 12,1" viewable diagonal area
	Active Area / Pixel Pitch	261.1 (H) x 163.2 (V) / 0.204 (H) x 0.204 (V) mm
	Native Res. / Colors	1280 (H) x 800 (V) / 262 K
	Brightness / Contrast	400 cd/m2 (typ) / 1000:1
	Response Time	< 25 ms
	Viewing Angle	Horiz. 176° (-88° ~ + 88°), Vert. 176° (-88° ~+ 88°)
	Light Source	LED, Long Life 35.000 hrs (typ)
<b>Input Sources:</b>	Audio System	2W Speaker x 2
<b>Input Terminals:</b>	1 x VGA (15 Pin Female D-SUB) 1x PC Audio (Stereo headphone Jack) 1 x DC Power Plug	
<b>Convenient Features:</b>	Auto Calibration, Back Light Adjustment, Plug & Play (VESA DDC/CI, DDC 2B) OSD Multi Languages, Wall Mount Ready (VESA 75 x 75 mm)	
<b>Power:</b>	External AC-to-12VDC power adapter with universal / Auto-Sensing, AC 90 to 260 V, 50 / 60 Hz	
<b>Power cons.</b>	Operation / Power	10 watt, < 1 watt (Support DPMS)
<b>Operating:</b>	Temperature / Humidity	-15°C ~ 70°C / 10% ~ 90% (no condensation)
<b>Storage:</b>	Temperature / Humidity	-30°C ~ 80°C / 10% ~ 90% (no condensation)
<b>Dimensions:</b>	Physical	WxHxD = see drawing
	Carton	WxHxD = TBD
<b>Weight:</b>	N.W. / G.W	4.5 kg / 5.5 kg
<b>Options:</b>	<b>Touch</b> Resistive Touch Capacitive Touch SAW Touch Infrared Touch	<b>Enhanced Panel</b> Protection Glass High Brightness Wide Temperature Sunlight Readable
		<b>Others</b> Digital Signage Motion Sensor Light Sensor Auto-Dimming SV+AV, DVI, HDMI

Errors and omissions excepted



AD/BOARD		MODEL	FM12W5	DATE	2014-May-06	PART NAME	ASSEMBLY	SCALE	1:000
INVERTER									
KEY PAD									
PANEL:		VERSION				APPROVED	DRAWN	CHRIS	UNIT
		V1	MATERIAL	METAL					MM

Winsonic Electronics. Co., Ltd.

TOP VIEW

Full size drawing available on request!