

## FM1565 Flush-Mount 15" Monitor 1920x1080

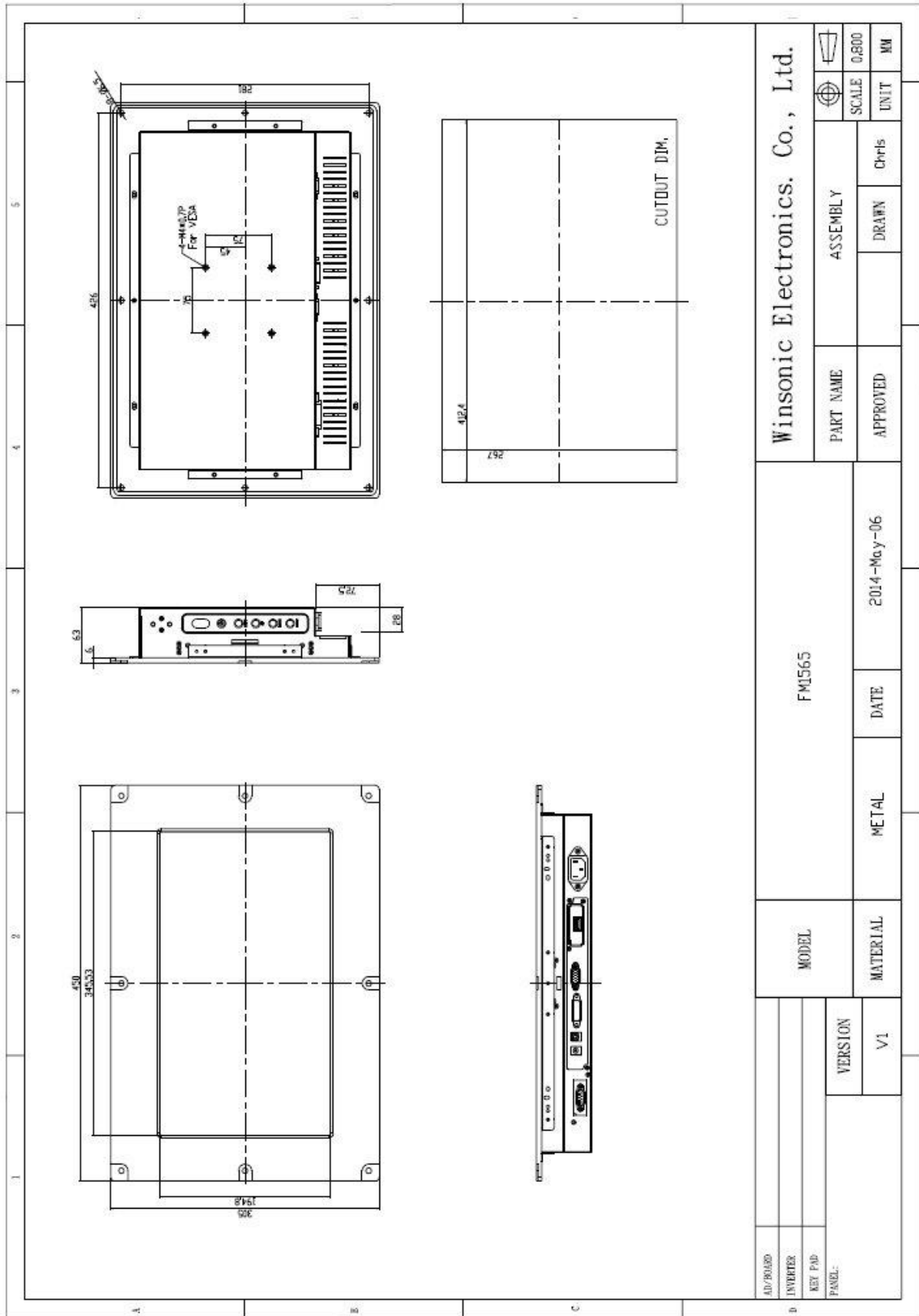
- Modular mechanical design provides flexible product configuration and easy maintenance
- Optional built-in touch screen for interactive applications
- Optional auto-brightness sensor offers application by day and night
- Optional with different frames (Chassis Type, Chassis Mount, Open Frame, Rack Mount etc.)



### Specifications

<b>Panel:</b>	Cell Type / Glass Surface	TFT LCD / Black Anti-Glare, low reflection coating	
	Aspect Ratio / Size	Wide / 15.6" viewable diagonal area	
	Active Area / Pixel Pitch	344.16 (H) x 193.59 (V) / 0.1793 (H) x 0.1793 (V) mm	
	Native Res. / Colors	1920 (H) x 1080 (V) / 16.7 M	
	Brightness / Contrast	250 cd/m <sup>2</sup> (typ) / 500:1	
	Response Time	< 12 ms	
	Viewing Angle	Horiz. 90° (-45° ~ + 45°), Vert. 65° (-40° ~ + 25°)	
	Light Source	LED, Long Life 35.000 hrs (typ)	
<b>Input Sources:</b>	Audio System	2W speaker x 2	
<b>Input Terminals:</b>	1 x VGA (15 Pin Female D-SUB) 1x PC Audio (Stereo headphone Jack) 1 x DC Power Plug		
<b>Convenient Features:</b>	Auto Calibration, Back Light Adjustment, Plug & Play (VESA DDC/CI, DDC 2B) OSD Multi Languages, Wall Mount Ready (VESA)		
<b>Power:</b>	Internal power supply with universal / Auto-Sensing, AC 90 to 260 V, 50 / 60 Hz		
<b>Power cons.</b>	Operation / Power	13 watt, < 1 watt (Support DPMS)	
<b>Operating:</b>	Temperature / Humidity	0°C ~ 50°C, 10% ~ 90% (no condensation)	
<b>Storage:</b>	Temperature / Humidity	-20°C ~ 60°C, 10% ~ 90% (no condensation)	
<b>Dimensions:</b>	Physical	See drawing	
	Carton	TBA	
<b>Weight:</b>	N.W. / G.W	4.5 kg / 5.5 kg	
<b>Options:</b>	<b>Touch</b>	<b>Enhanced Panel</b>	<b>Others</b>
	Resistive Touch Capacitive Touch SAW Touch Infrared Touch	High Brightness Wide Temperature Sunlight Readable Protection Glass	Digital Signage Motion Sensor Light Sensor Auto-Dimming SV+AV, DVI, HDMI, DP etc.

Errors and omissions excluded



AD/BOARD	MODEL		FM1565		PART NAME		ASSEMBLY		SCALE 0.800	UNIT MM
INVERTER	MATERIAL		METAL	DATE	2014-May-06	APPROVED	DRAWN	Chris		
KEY FMB	VERSION		V1		Winsonic Electronics. Co., Ltd.					
PANEL										

Full size drawing available on request