

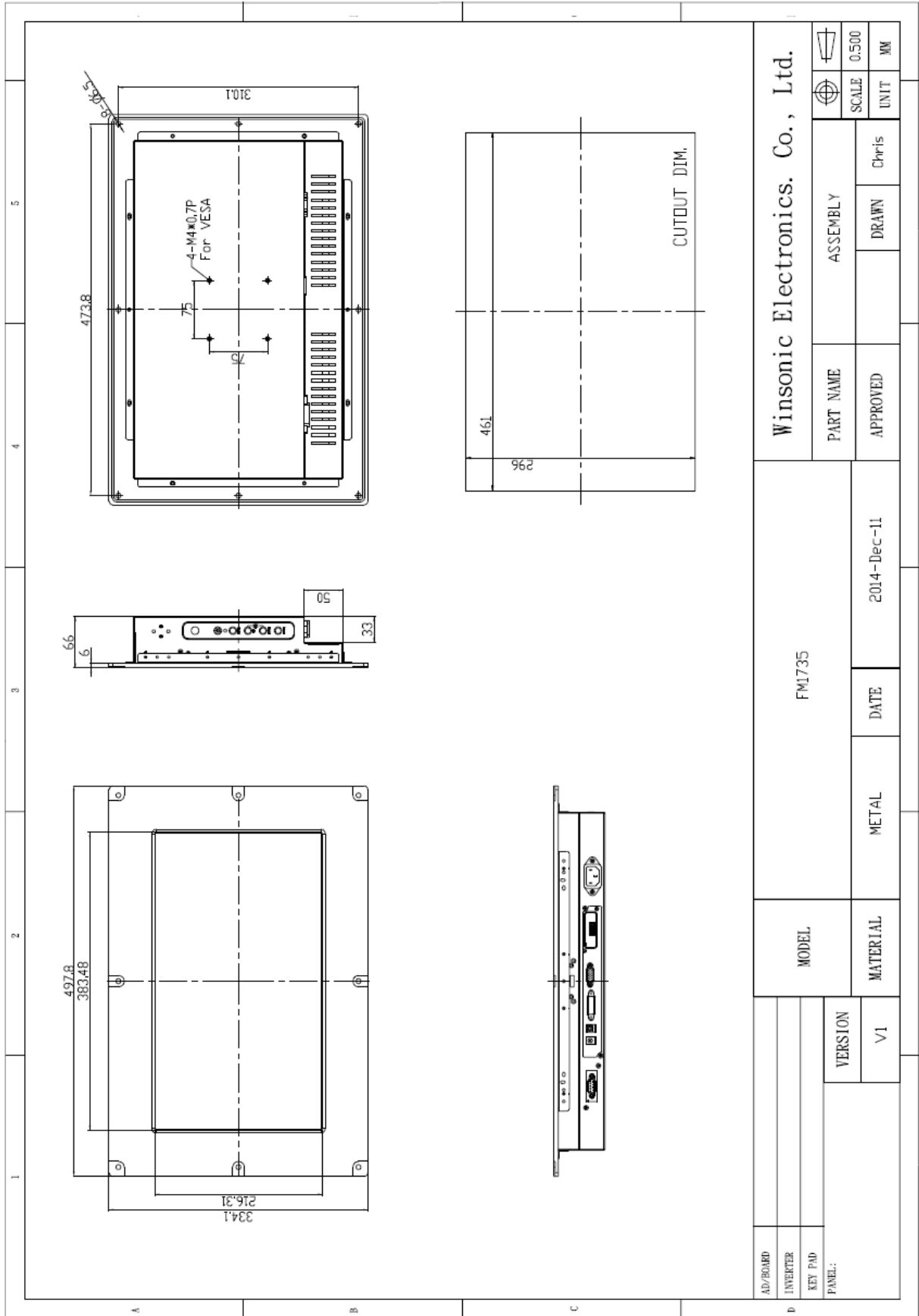
FM1735 Flush Mount 17" Monitor 1920x1080

- **Modular mechanical design provides flexible product configuration and easy maintenance**
- **Optional built-in touch screen for interactive applications**
- **Optional auto-brightness sensor offers application by day and night**
- **Optional with different frames (Chassis Type, Chassis Mount, Rack Mount, Open Frame etc.)**



Specifications		
Panel:	Cell Type / Glass Surface	TFT LCD / Black Anti-Glare, low reflection coating
	Aspect Ratio / Size	Wide / 17.3" viewable diagonal area
	Active Area / Pixel Pitch	381.89 (H) x 214.81 (V) / 0.1989 (H) x 0.1989 (V) mm
	Native Res. / Colors	1920 (H) x 1080 (V) / 262K
	Brightness / Contrast	300 cd/m2 (typ) / 600:1
	Response Time	< 35 ms
	Viewing Angle	Horiz. 178° (-89° ~ + 89°), Vert. 178° (-89° ~ + 89°)
	Light Source	LED, Long Life 35.000 hrs (typ)
Input Sources:	Audio System	2W Speaker x 2
Input Terminals:	1 x VGA (15 Pin Female D-SUB) 1x PC Audio (Stereo headphone Jack) 1 x DC Power Plug	
Convenient Features:	Auto Calibration, Back Light Adjustment, Plug & Play (VESA DDC/CI, DDC 2B) OSD Multi Languages, Wall Mount Ready (VESA 75 x 75 mm)	
Power:	External AC-to-12VDC power adapter with universal / Auto-Sensing, AC 90 to 260 V, 50 / 60 Hz	
Power cons.	Operation / Power	15 watt, < 1 watt (Support DPMS)
Operating:	Temperature / Humidity	0°C ~ 50°C / 10% ~ 90% (no condensation)
Storage:	Temperature / Humidity	-20°C ~ 60°C / 10% ~ 90% (no condensation)
Dimensions:	Physical	WxHxD = see drawing
	Carton	WxHxD = TBD
Weight:	N.W. / G.W	4.5 kg / 5.5 kg
Options:	Touch	Enhanced Panel
	Resistive Touch Capacitive Touch SAW Touch Infrared Touch	Protection Glass High Brightness Wide Temperature Sunlight Readable

Errors and omissions excepted



Full size drawing available on request!