

FM17W5 Flush Mount 17" Monitor

- **Modular mechanical design provides flexible product configuration and easy maintenance**
- **Optional built-in touch screen for interactive applications**
- **Optional auto-brightness sensor offers application by day and night**
- **Optional with different frames (Open Frame, Chassis Type, Chassis Mount, Rack Mount etc.)**

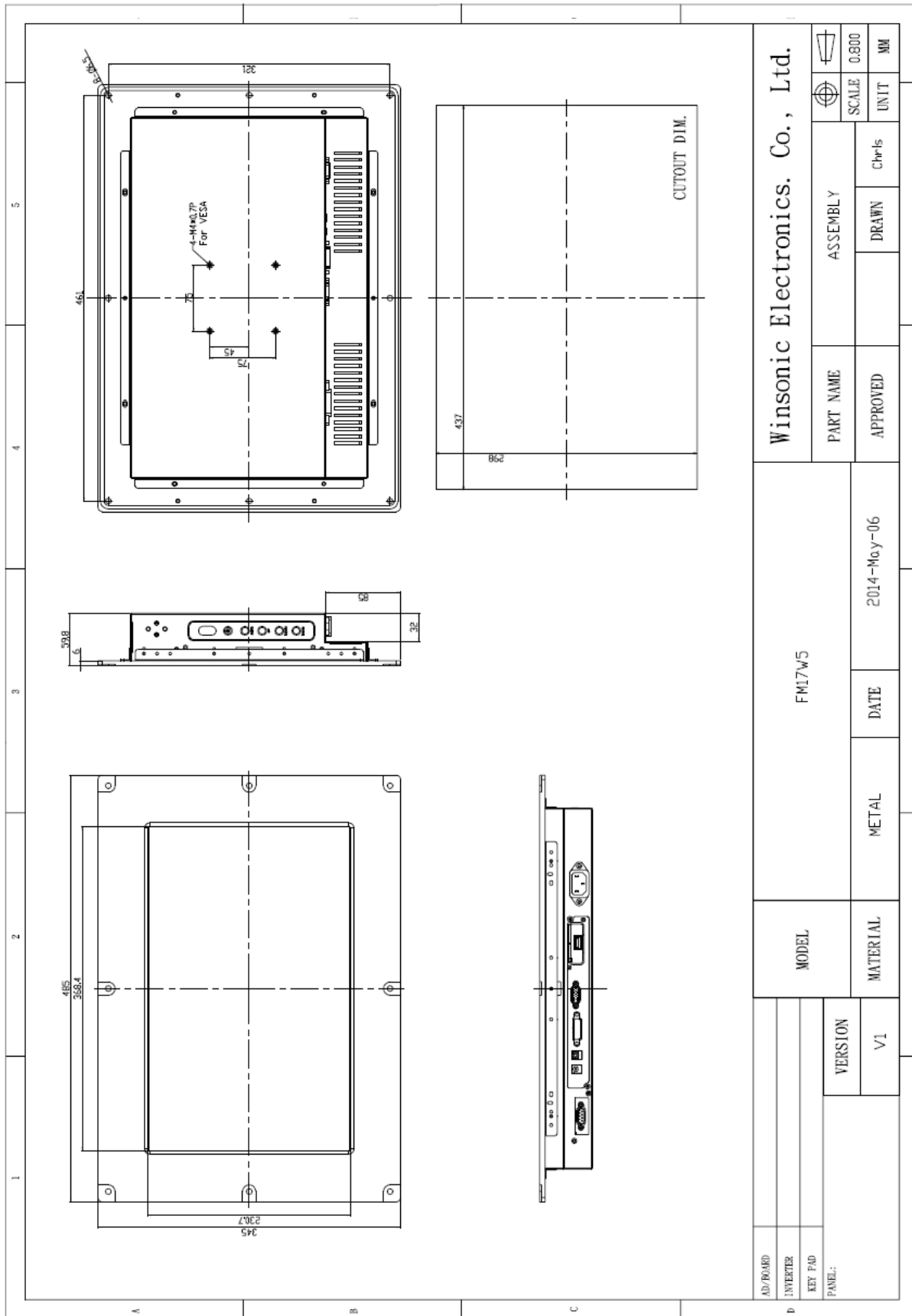


Specifications

Panel:	Cell Type / Glass Surface	TFT LCD / Black Anti-Glare, low reflection coating	
	Aspect Ratio / Size	Wide / 17" viewable diagonal area	
	Active Area / Pixel Pitch	367.2 (H) x 229.5 (V) / 0.255(H) x 0.255(V) mm	
		PM17W5-WP30C0	PM17W5-WU20C0
	Native Res. / Colors	1440 (H) x 900 (V) / 262 K	1920 (H) x 1200 (V) / 262 K
	Brightness / Contrast	300 cd/m ² (typ) / 800:1	200 cd/m ² (typ) / 600:1
	Response Time	< 8 ms	< 16 ms
	Viewing Angle	H. 130° (-65° ~ + 65°), V. 100° (-50° ~ + 50°)	
	Light Source	CCFL, Long Life 50.000 hrs (typ)	
Input Sources:	Audio System	2W Amplifier	
Input Terminals:	1 x VGA (15 Pin Female D-SUB) 1x PC Audio (Stereo headphone Jack) 1 x DC Power Plug		
Convenient Features:	Auto Calibration, Back Light Adjustment, Plug & Play (VESA DDC/CI, DDC 2B) OSD Multi Languages, Wall Mount Ready (VESA 75 x 75 mm)		
Power:	Internal power supply with universal / Auto-Sensing, AC 90 to 260 V, 50 / 60 Hz		
Power cons.:	Operation / Power	15 watt, < 1 watt (Support DPMS)	
Operating:	Temperature / Humidity	0°C ~ 50°C, 10% ~ 90% (no condensation)	
Storage:	Temperature / Humidity	-20°C ~ 60°C, 10% ~ 90% (no condensation)	
Dimensions:	Physical	WxHxD = 485 x 345 x 59.8 mm	
	Carton	WxHxD = TBD	
Weight:	N.W. / G.W	4.5 kg / 5.5 kg	
Options:	Touch	Enhanced Panel	Others
	Resistive Touch Capacitive Touch SAW Touch	Protection Glass High Brightness Wide Temperature Sunlight Readable	Digital Signage Motion Sensor Light Sensor Auto-Dimming SV+AV, DVI, HDMI etc.

Errors and omissions excepted

Full-size drawing available on request!



AD/BOARD		MODEL		FM17W5		PART NAME		ASSEMBLY		SCALE		0.800	
INVERTER		MATERIAL		METAL		DATE		2014-Mcy-06		APPROVED		CHRIS	
KEY PAD		VERSION		V1		DRAWN		CHRIS		UNIT		MM	
PANEL:													

Winsonic Electronics. Co., Ltd.