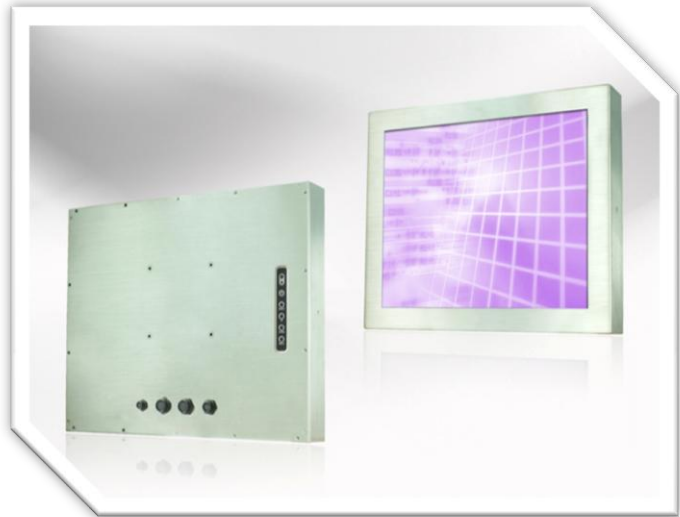


## FCH0576 Full IP66 5,7" Chassis Monitor 640 x 480

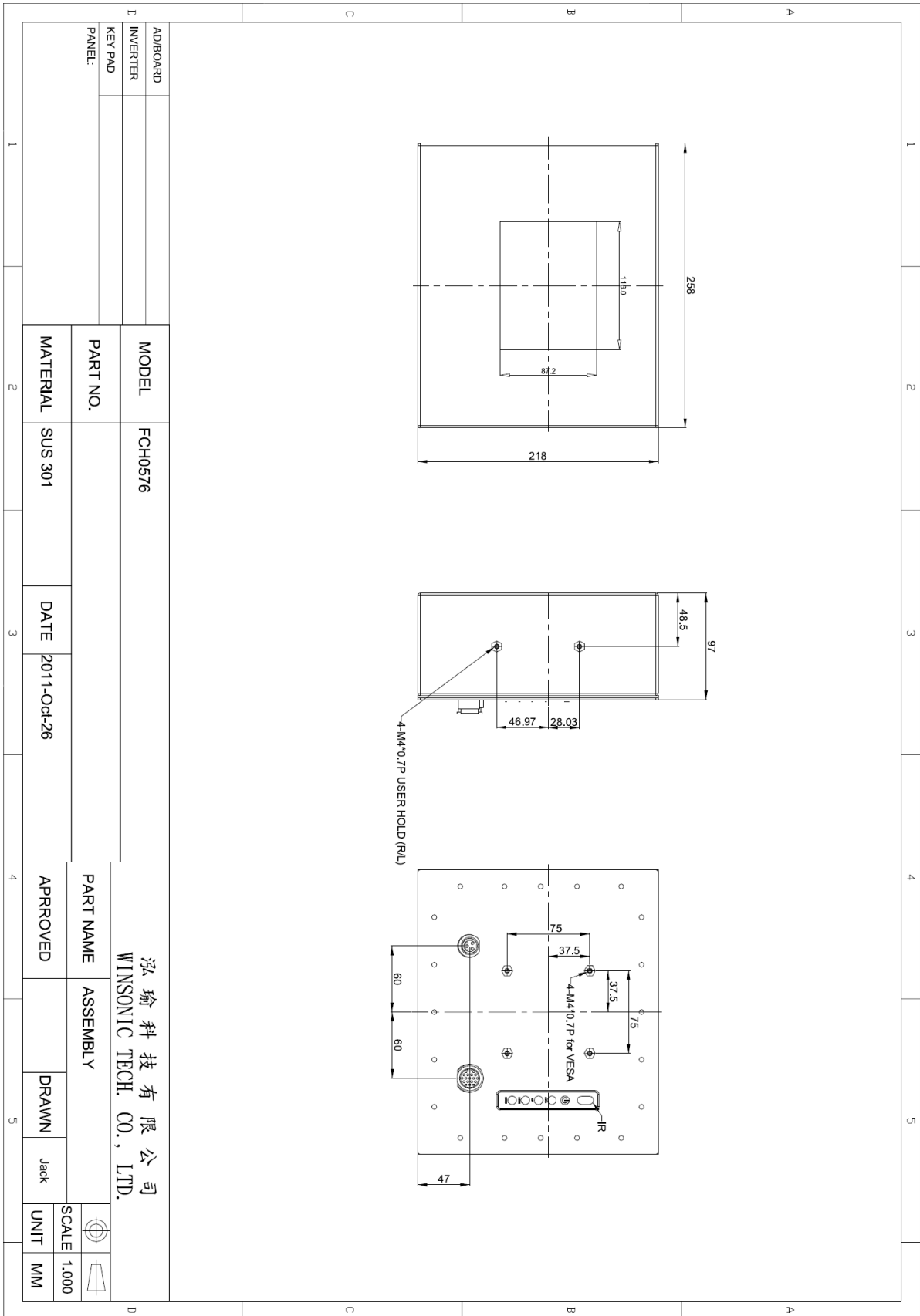
- Modular mechanical design provides flexible product configuration and easy maintenance
- Stainless Steel Enclosure
- Optional auto-brightness sensor offers application by day and night



### Specifications

<b>Panel:</b>	Cell Type / Glass Surface	TFT LCD / Black Anti-Glare, low reflection coating	
	Aspect Ratio / Size	4:3 / 5,7" viewable diagonal area	
	Active Area / Pixel Pitch	115.2 (H) x 86.4 (V) / 0.18 (H) x 0.18 (V) mm	
	Native Res. / Colors	640 (H) x 480 (V) / 262 K	
	Brightness / Contrast	400 cd/m2 (typ) / 800:1	
	Response Time	< 25 ms	
	Viewing Angle	H. 160° (-80° ~ + 80°), V. 140° (-70° ~+ 70°)	
Light Source	LED Backlight, Long Life 35.000 hrs (typ)		
<b>Input Sources:</b>	Audio System	N/A	
<b>Input Terminals:</b>	1 x VGA , 1 x DC Power		
<b>Convenient Features:</b>	Auto Calibration, Back Light Adjustment, Plug & Play (VESA DDC/CI, DDC 2B) OSD Multi Languages, Wall Mount Ready (VESA 75 x 75 mm )		
<b>Power:</b>	External AC-to-12VDC power adapter with universal / Auto-Sensing, AC 90 to 260 V, 50 / 60 Hz		
<b>Power cons.</b>	Operation / Power	5 watt, < 1 watt (Support DPMS)	
<b>Operating Temp.:</b>	Temperature / Humidity	0°C ~ 50°C, 10% ~ 90% (no condensation)	
<b>Storage Temp.:</b>	Temperature / Humidity	-20°C ~ 60°C, 10% ~ 90% (no condensation)	
<b>Weight:</b>	N.W. / G.W	4.0 kg / 6.0 kg	
<b>Options:</b>	<b>Touch</b>	<b>Enhanced Panel</b>	<b>Others</b>
	Resistive Touch	High Brightness	Digital Signage
	Capacitive Touch	Wide Temperature	Motion Sensor
	SAW Touch	Sunlight Readable	Light Sensor
	Infrared Touch		Auto-Dimming
Protection Glass			SV+AV, DVI, HDMI, DP

Errors and omissions excepted.



Full-size drawing available on request.