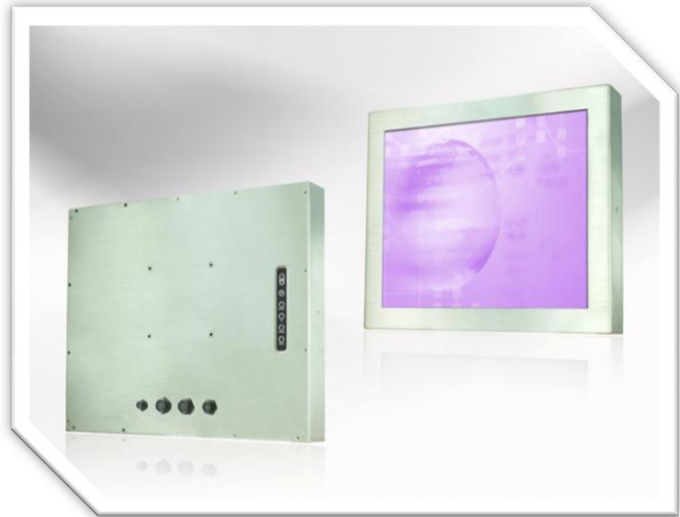


FCH1205

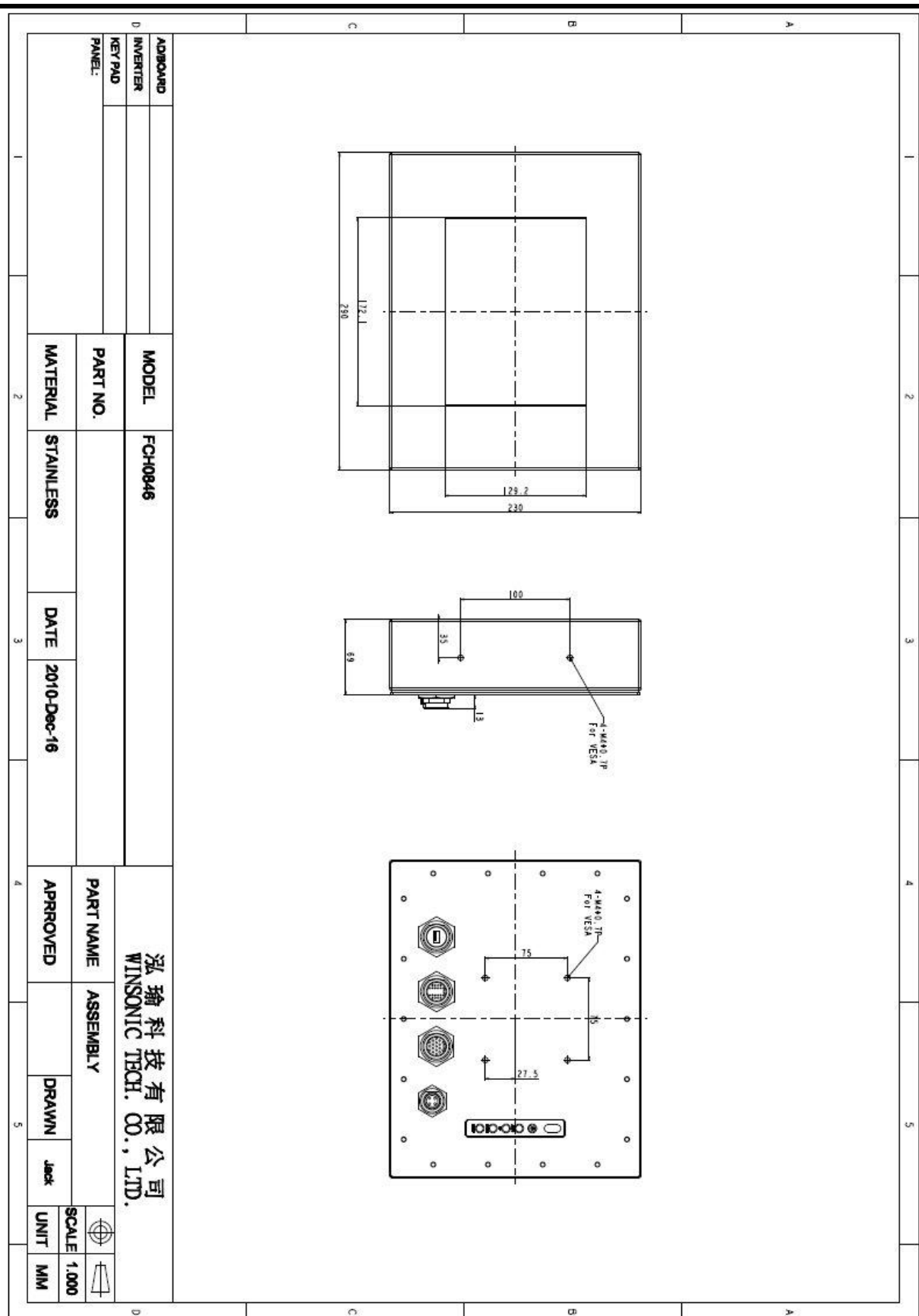
Full IP66 12.1" Chassis Monitor

- Modular mechanical design provides flexible product configuration and easy maintenance
- Stainless Steel Enclosure
- Optional auto-brightness sensor offers application by day and night



Specifications			
Type	FCH1205-SN25LO		FCH1205-XN35LO
LCD Panel	TFT LCD / Black Anti-Glare, low reflection coating		
Aspect Ratio	4:3 / 12.1" viewable diagonal area		
Active Area / Pixel Pitch	246.0 (H) x 184.5 (V) / 0.3075 (H) x 0.3075 (V) mm	245.76 (H) x 184.32 (V) / 0.24 (H) x 0.24 (V) mm	
Resolution / Colors	800 (H) x 600 (V) / 262 K	1024 (H) x 768 (V) / 262 K	
Brightness / Contrast	250 cd/m2 (typ) / 600:1	350 cd/m2 (typ) / 550:1	
Response Time	< 35 ms		< 25 ms
Viewing Angle	Horiz. 140° (-70° ~ + 70°) Vert. 120° (-60° ~+ 60°)	Horiz. 160° (-80° ~ + 80°) Vert. 140° (-70° ~+ 70°)	
Light Source	LED, Long Life 35.000 hrs (typ)		
Input Terminals	1 x VGA , 1x DVI 1 x DC Power		
Convenient Features	Auto Calibration, Back Light Adjustment, Plug & Play (VESA DDC/CI, DDC 2B) OSD Multi Languages, Wall Mount Ready (VESA 75 x 75 mm)		
Power:	12 VDC in. External AC-to-12VDC power adapter with universal / Auto-Sensing, AC90 to 260 V, 50 / 60 Hz		
Operation / Power:	20 watt, < 2 watt (Support DPMS)		
Operating Temp.:	0°C ~ 50°C, 10% ~ 90% (no condensation)		
Storage Temp.:	-20°C ~ 60°C, 10% ~ 90% (no condensation)		
Weight:	6.0 kg / 8.0 kg		
Options:	Touch Resistive Touch Capacitive Touch SAW Touch Infrared Touch	Enhanced Panel High Brightness Wide Temperature Sunlight Readable Protection Glass	Others Digital Signage Motion Sensor Light Sensor Auto-Dimming SV+AV, DVI, HDMI, DP

Errors and omissions excepted.



Full-size drawing available on request.