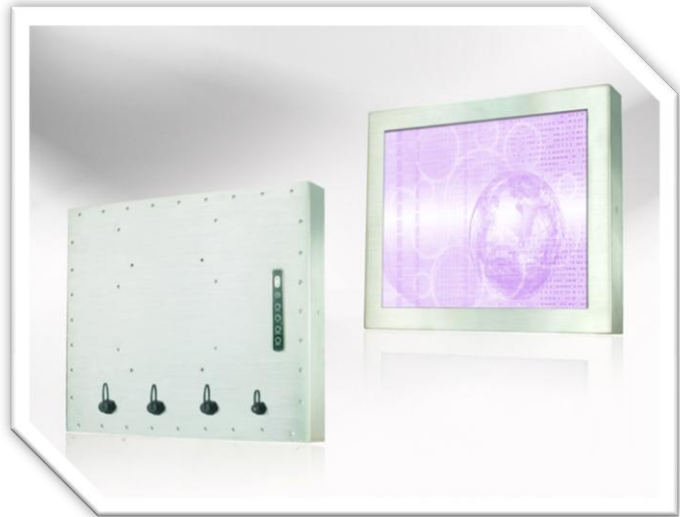


## FCH2005 Full IP66 20" Chassis Monitor 1600x1200

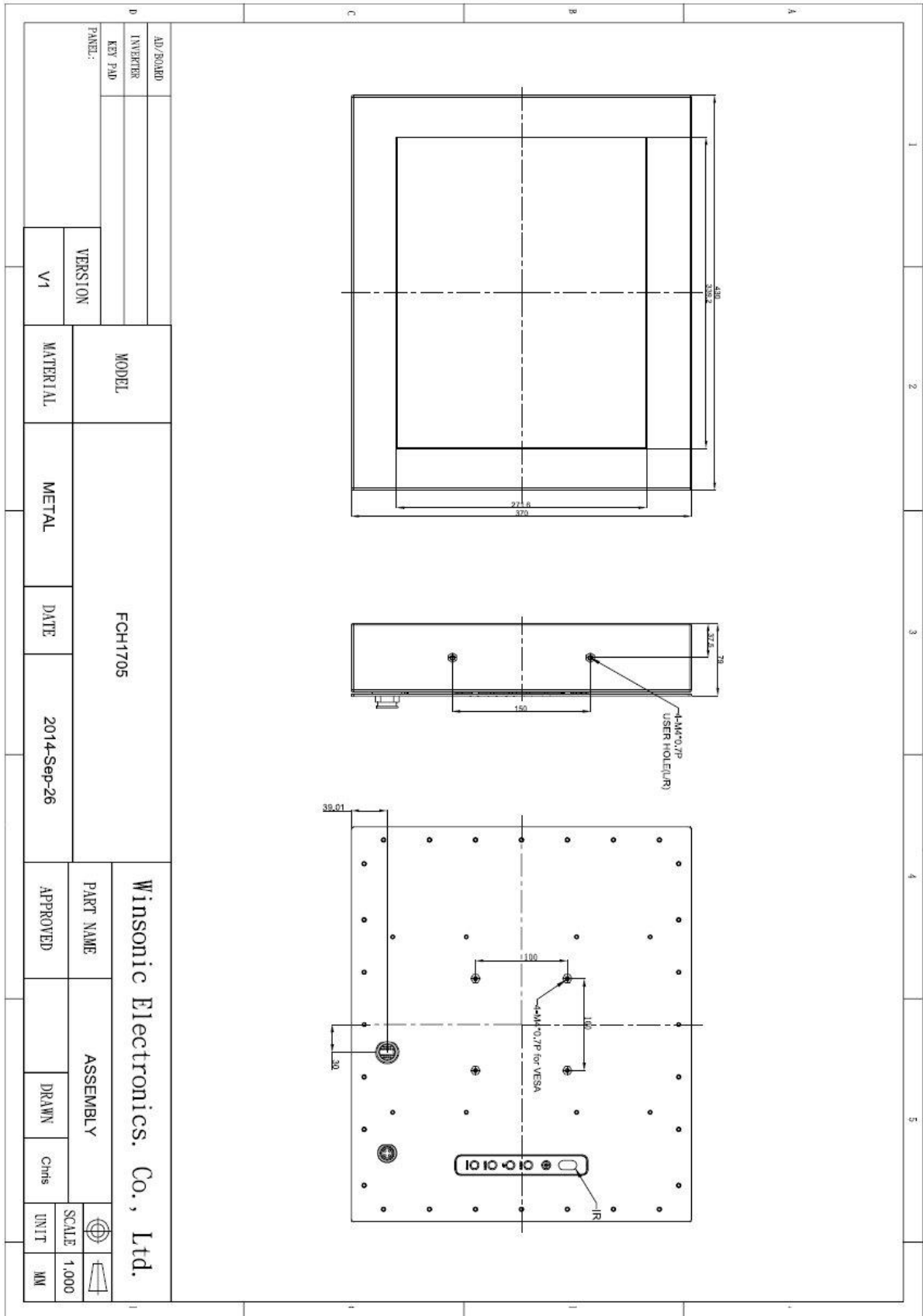
- **Modular mechanical design provides flexible product configuration and easy maintenance**
- **Stainless Steel Enclosure**
- **Optional auto-brightness sensor offers application by day and night**



### Specifications

<b>Panel:</b>	Cell Type / Glass Surface	TFT LCD / Black Anti-Glare, low reflection coating	
	Aspect Ratio / Size	4:3 / 20,1" viewable diagonal area	
	Active Area / Pixel Pitch	408 (H) x 306 (V) / 0.255 (H) x 0.255 (V) mm	
	Native Res. / Colors	1600 (H) x 1200 (V) / 16.7 M	
	Brightness / Contrast	400 cd/m2 (typ) / 1000:1	
	Response Time	< 8 ms	
	Viewing Angle	Horiz. 160° (-80° ~ + 80°), Vert. 160° (-80° ~+ 80°)	
	Light Source	LED, Long Life 35.000 hrs (typ)	
<b>Input Sources:</b>	Audio System	N/A	
<b>Input Terminals:</b>	1 x VGA , 1 x DC Power		
<b>Convenient Features:</b>	Auto Calibration, Back Light Adjustment, Plug & Play (VESA DDC/CI, DDC 2B) OSD Multi Languages, Wall Mount Ready (VESA 200 x 200 mm )		
<b>Power:</b>	12 VDC in. External AC-to-12VDC power adapter with universal / Auto-Sensing, AC 90 to 260 V, 50 / 60 Hz		
<b>Power cons.</b>	Operation / Power	118 watt, < 5 watt (Support DPMS)	
<b>Operating Temp.:</b>	Temperature / Humidity	0°C ~ 50°C, 10% ~ 90% (no condensation)	
<b>Storage Temp.:</b>	Temperature / Humidity	-20°C ~ 60°C, 10% ~ 90% (no condensation)	
<b>Weight:</b>	N.W. / G.W	9 kg / 10.5 kg	
<b>Options:</b>	<b>Touch</b>	<b>Enhanced Panel</b>	<b>Others</b>
	Resistive Touch Capacitive Touch SAW Touch Infrared Touch	High Brightness Wide Temperature Sunlight Readable Protection Glass	Digital Signage Motion Sensor Light Sensor Auto-Dimming SV+AV, DVI, HDMI, DP

Errors and omissions excepted.



Full-size drawing available on request.