

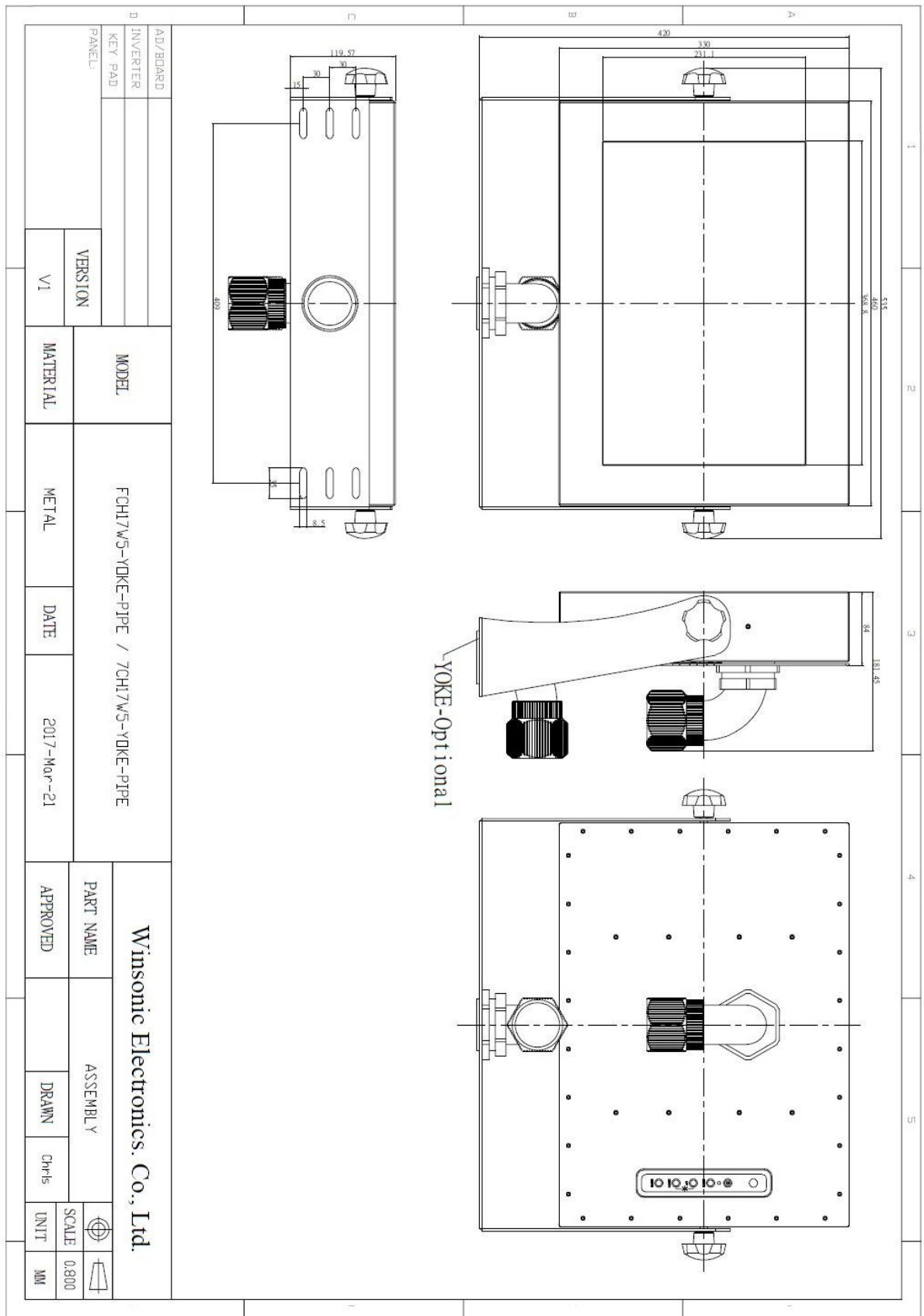
## FCH17W5-Y-P IP66 17" Chassis Monitor 1440x900

- **Modular mechanical design provides flexible product configuration and easy maintenance**
- **Stainless Steel Enclosure with Yoke Mount and Pipe Cable Management**
- **Optional auto-brightness sensor offers application by day and night**



Specifications			
<b>Panel:</b>	Cell Type / Glass Surface	TFT LCD / Black Anti-Glare, low reflection coating	
	Aspect Ratio / Size	Wide / 17" viewable diagonal area	
	Active Area / Pixel Pitch	367.2 (H) x 229.5 (V) / 0.255(H) x 0.255(V) mm	
	Native Res. / Colors	1440 (H) x 900 (V) / 262 K	
	Brightness / Contrast	300 cd/m2 (typ) / 800:1	
	Response Time	< 8 ms	
	Viewing Angle	H. 130° (-65° ~ + 65°), V. 100° (-50° ~+ 50°)	
	Light Source	CCFL, Long Life 50.000 hrs (typ)	
<b>Input Sources:</b>	Audio System	N/A	
<b>Input Terminals:</b>	1 x VGA, 1 x DC Power		
<b>Convenient Features:</b>	Auto Calibration, Back Light Adjustment, Plug & Play (VESA DDC/CI, DDC 2B) OSD Multi Languages, Wall Mount Ready (VESA 100 x 100 mm)		
<b>Power:</b>	12 VDC in. External Power Supply with universal / Auto-Sensing, AC 90 to 260 V, 50 / 60 Hz		
<b>Power cons.</b>	Operation / Power	14 watt, < 2 watt (Support DPMS)	
<b>Operating Temp.:</b>	Temperature / Humidity	0°C ~ 50°C, 10% ~ 90% (no condensation)	
<b>Storage Temp.:</b>	Temperature / Humidity	-20°C ~ 60°C, 10% ~ 90% (no condensation)	
<b>Weight:</b>	N.W. / G.W	8.4 kg / 10.4 kg	
<b>Options:</b>	<b>Touch</b>	<b>Enhanced Panel</b>	<b>Others</b>
	Resistive Touch	LED Backlight	Digital Signage
	Capacitive Touch	High Brightness	Motion Sensor
	SAW Touch	Wide Temperature	Light Sensor
Infrared Touch	Sunlight Readable	Auto-Dimming	
	Protection Glass	SV+AV, DVI, HDMI, DP	

Errors and omissions excepted.



Full-size drawing available on request.