

FCH5504-WH35L0 55" Monitor/Touchmonitor

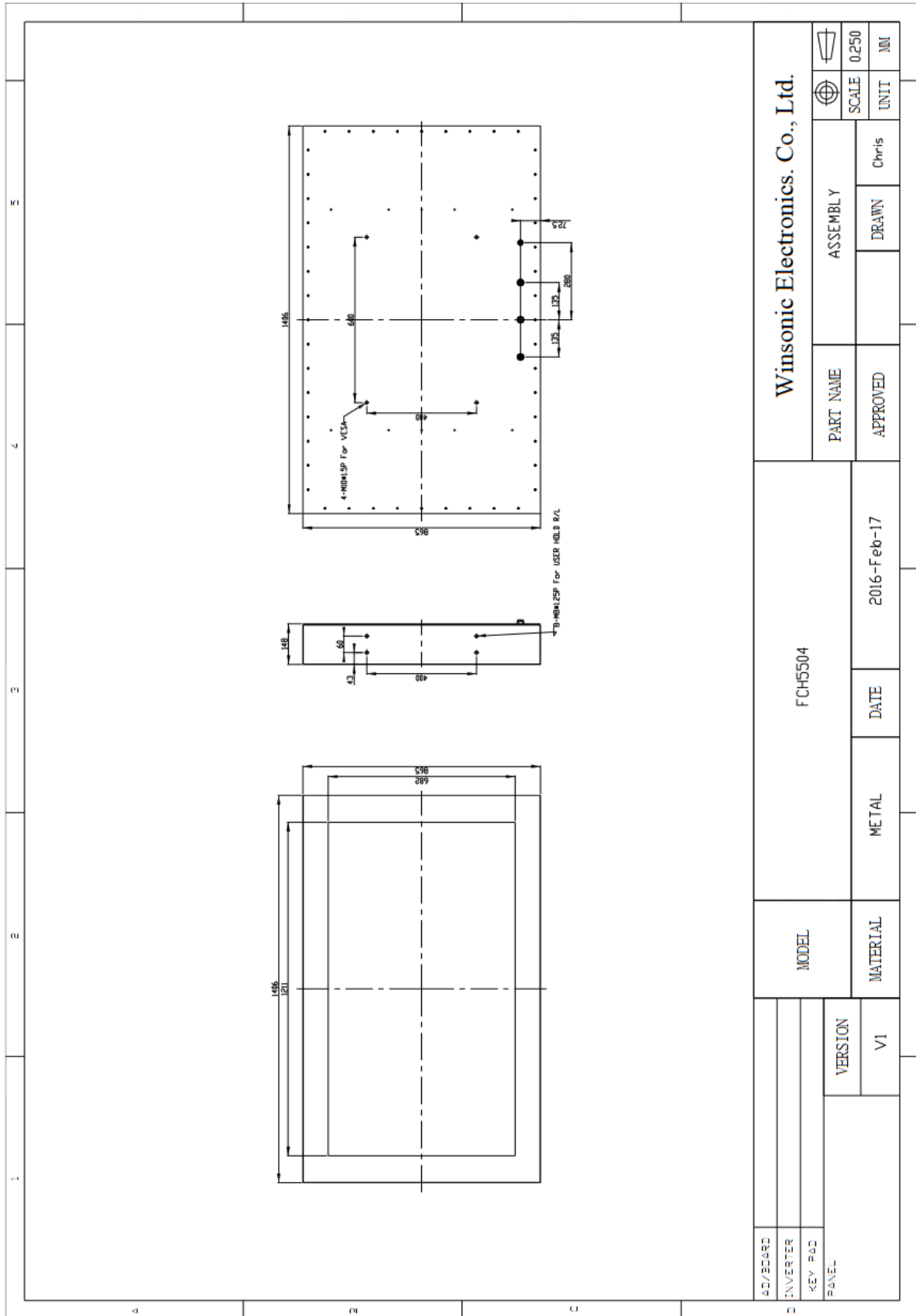
- Modular mechanical design provides flexible product configuration and easy maintenance
- Optional built-in touch screen for interactive applications
- Optional auto-brightness sensor offers application by day and night
- Stainless steel enclosure IP66 all round



Specifications			
Panel:	Cell Type / Glass Surface	TFT LCD / Black Anti-Glare, low reflection coating	
	Aspect Ratio / Size	Wide / 55" viewable diagonal area	
	Active Area / Pixel Pitch	1209.6 (H) x 680.4 (V) mm / 0.63(H) x 0.63(V) mm	
	Native Res. / Colors	1920 (H) x 1080 (V) / 16.7 Million	
	Brightness / Contrast	350 cd/m ² (typ) / 3000:1	
	Response Time	< 8 ms	
	Viewing Angle	H. 178° (-89° ~ + 89°), V. 178° (-89° ~+ 89°)	
	Light Source	LED, Long Life 35.000 hrs (typ)	
Input Sources:	Audio System	N/A	
Input Terminals:	1 x VGA, 1 x HDMI, 1 x Power		
Convenient Features:	Auto Calibration, Back Light Adjustment, Plug & Play (VESA DDC/CI, DDC 2B) OSD Multi Languages, Wall Mount Ready (VESA 100 x 100 mm)		
Power:	Internal power supply with universal / Auto-Sensing, AC 90 to 260 V, 50 / 60 Hz		
Power cons.	Operation / Powersaving	160 watt, < 1 watt (Supports DPMS)	
Operating cond.:	Temperature / Humidity	0°C ~ 50°C, 10% ~ 90% (no condensation)	
Storage cond.:	Temperature / Humidity	-20°C ~ 60°C, 10% ~ 90% (no condensation)	
Dimensions:	Physical	W x H x D = 1406 x 865 x 148 mm	
	Carton	TBD	
Weight:	N.W. / G.W	43.5 Kgs / 46.5 Kgs	
Options:	Touch	Enhanced Panel	Others
	Resistive Touch Capacitive Touch SAW Touch Infrared Touch Protection Glass	High Brightness Wide Temperature Sunlight Readable	Digital Signage (Standalone) Digital Signage (Networked) Light Sensor Motion Sensor SV+AV, DVI, HDMI

Errors and omissions excepted

Irrtümer und Auslassungen vorbehalten



Full-size drawing available on request.