

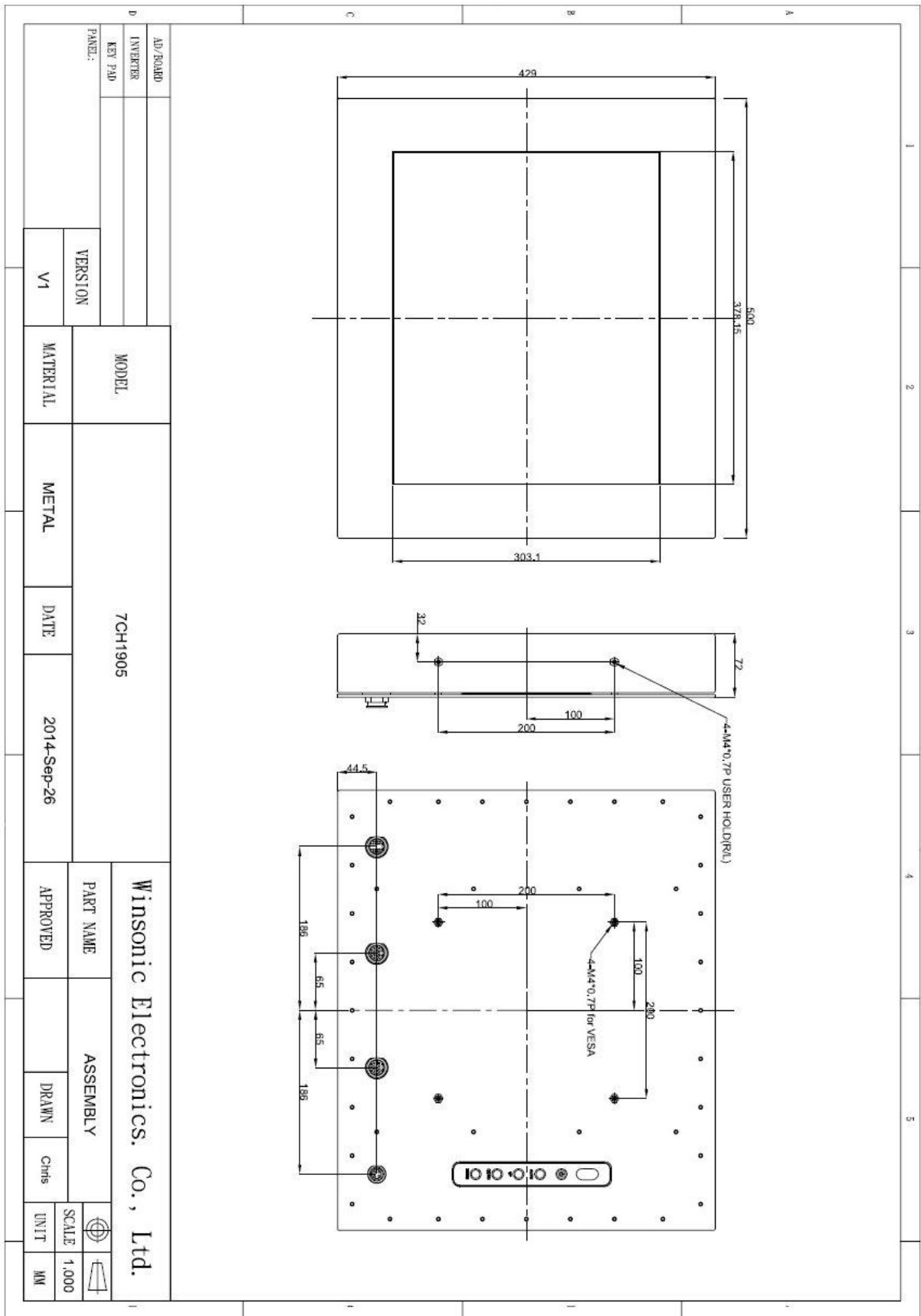
## 7CH1905 Full IP67 19" Chassis Monitor 1280x1024

- Modular mechanical design provides flexible product configuration and easy maintenance
- Enclosure SECC + Powder coating
- IP67 compliant
- Custom design available



Specifications		
<b>Panel:</b>	Cell Type / Glass Surface	TFT LCD / Black Anti-Glare, low reflection coating
	Aspect Ratio / Size	5:4 / 19" viewable diagonal area
	Active Area / Pixel Pitch	376.3 (H) x 301.1 (V) / 0.294 (H) x 0.294 (V) mm
	Native Res. / Colors	1280 (H) x 1024 (V) / 16.7 M
	Brightness / Contrast	250 cd/m <sup>2</sup> (typ) / 800:1 (420 cd/m <sup>2</sup> available too)
	Response Time	< 5 ms
	Viewing Angle	Horiz. 170° (-85° ~ + 85°), Vert. 160° (-80° ~+ 80°)
	Light Source	LED, Long Life 35.000 hrs (typ)
	<b>Input Sources:</b>	Audio System
<b>Input Terminals:</b>	1 x VGA , 1 x DC Power Plug	
<b>Convenient Features:</b>	Auto Calibration, Back Light Adjustment, Plug & Play (VESA DDC/CI, DDC 2B) OSD Multi Languages, Wall Mount Ready (VESA 100 x 100 mm )	
<b>Power:</b>	12 VDC In. External AC-to-12VDC power adapter with universal / Auto-Sensing, AC 90 to 260 V, 50 / 60 Hz	
<b>Power cons.</b>	Operation / Power	33 watt, < 2 watt (Support DPMS)
<b>Operating Temp.:</b>	Temperature / Humidity	0°C ~ 50°C, 10% ~ 90% (no condensation)
<b>Storage Temp.:</b>	Temperature / Humidity	-20°C ~ 60°C, 10% ~ 90% (no condensation)
<b>Weight:</b>	N.W. / G.W	
<b>Options:</b>	<b>Touch</b> Resistive Touch Capacitive Touch SAW Touch Infrared Touch	<b>Enhanced Panel</b> High Brightness Wide Temperature Sunlight Readable Protection Glass
		<b>Others</b> Digital Signage Motion Sensor Light Sensor Auto-Dimming SV+AV, DVI, HDMI, DP

Errors and omissions excepted.



Full-size drawing available on request.