

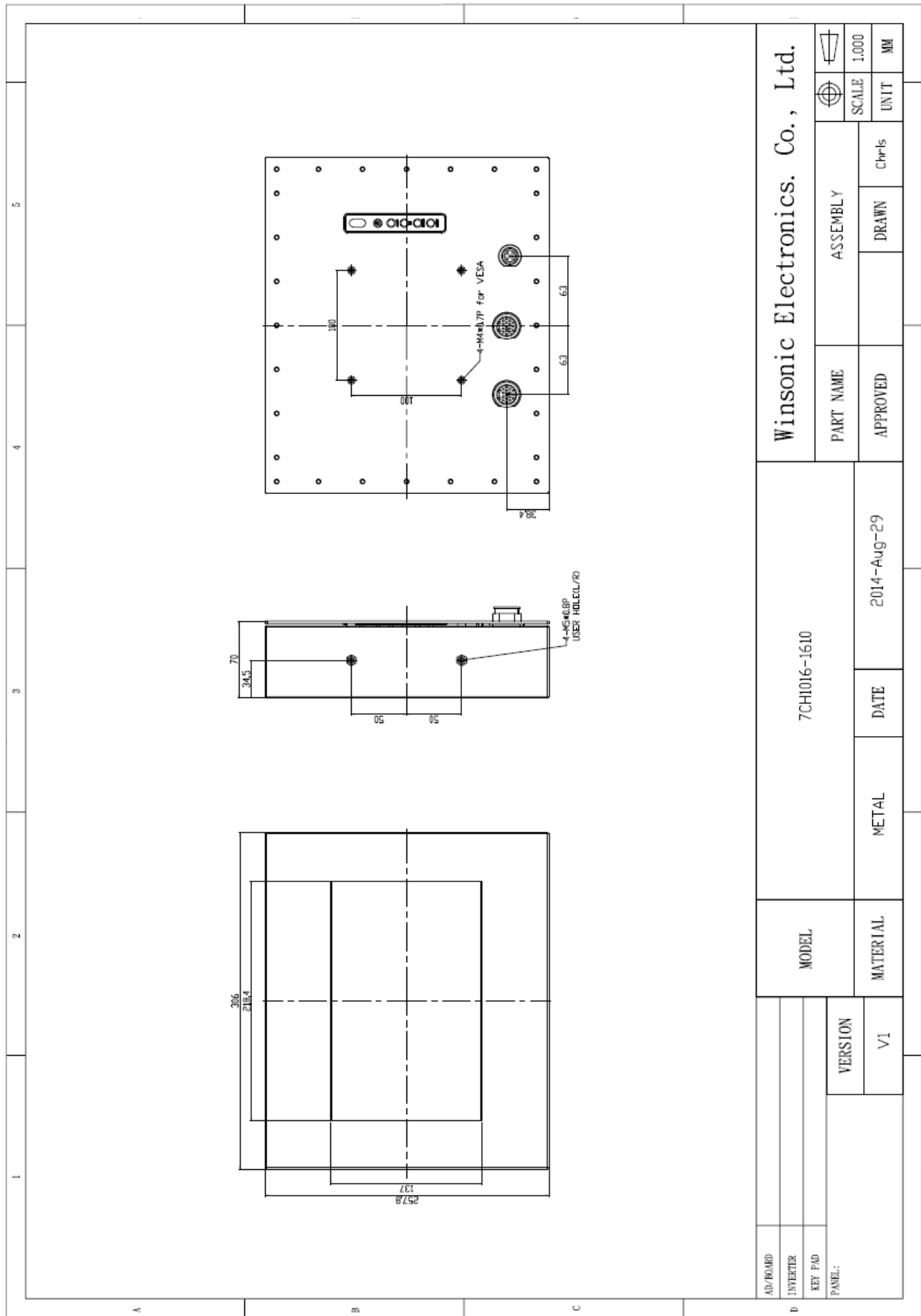
7CH1016-WU Full IP67 10" Chassis Monitor

- **Modular mechanical design provides flexible product configuration and easy maintenance**
- **Enclosure SECC + Powder coating**
- **IP67 compliant**
- **Custom design available**



Specifications			
Panel:	Cell Type / Glass Surface	TFT LCD / Black Anti-Glare, low reflection coating	
	Aspect Ratio / Size	1.6 :1 / 10" viewable diagonal area	
	Active Area / Pixel Pitch	216.81 (H) x 135.5 (V) / 0.113(H) x 0.113(V) mm	
	Native Res. / Colors	1920 (H) x 1200 (V) / 16.7M	
	Brightness / Contrast	350 cd/m2 (typ) / 600:1	
	Response Time	< 25 ms	
	Viewing Angle	H. 160° (-80° ~ + 80°), V. 160° (-80° ~+ 80°)	
	Light Source	LED Backlight, Long Life 35.000 hrs (typ)	
Input Sources:	Audio System	N/A	
Input Terminals:	1 x VGA, 1 x DC Power		
Convenient Features:	Auto Calibration, Back Light Adjustment, Plug & Play (VESA DDC/CI, DDC 2B) OSD Multi Languages, Wall Mount Ready (VESA 100 x 100 mm)		
Power:	12 VDC in. External Power Supply with universal / Auto-Sensing, AC 90 to 260 V, 50 / 60 Hz		
Power cons.	Operation / Power	9 watt, < 1 watt (Support DPMS)	
Operating Temp.:	Temperature / Humidity	0°C ~ 50°C, 10% ~ 90% (no condensation)	
Storage Temp.:	Temperature / Humidity	-20°C ~ 60°C, 10% ~ 90% (no condensation)	
Weight:	N.W. / G.W	3.4 kg / 4.5 kg	
Options:	Touch	Enhanced Panel	Others
	Resistive Touch Capacitive Touch Infrared Touch	High Brightness Wide Temperature Sunlight Readable Protection Glass	Digital Signage Motion Sensor Light Sensor Auto-Dimming SV+AV, DVI, HDMI, DP etc.

Errors and omissions excepted.



Full-size drawing available on request.