

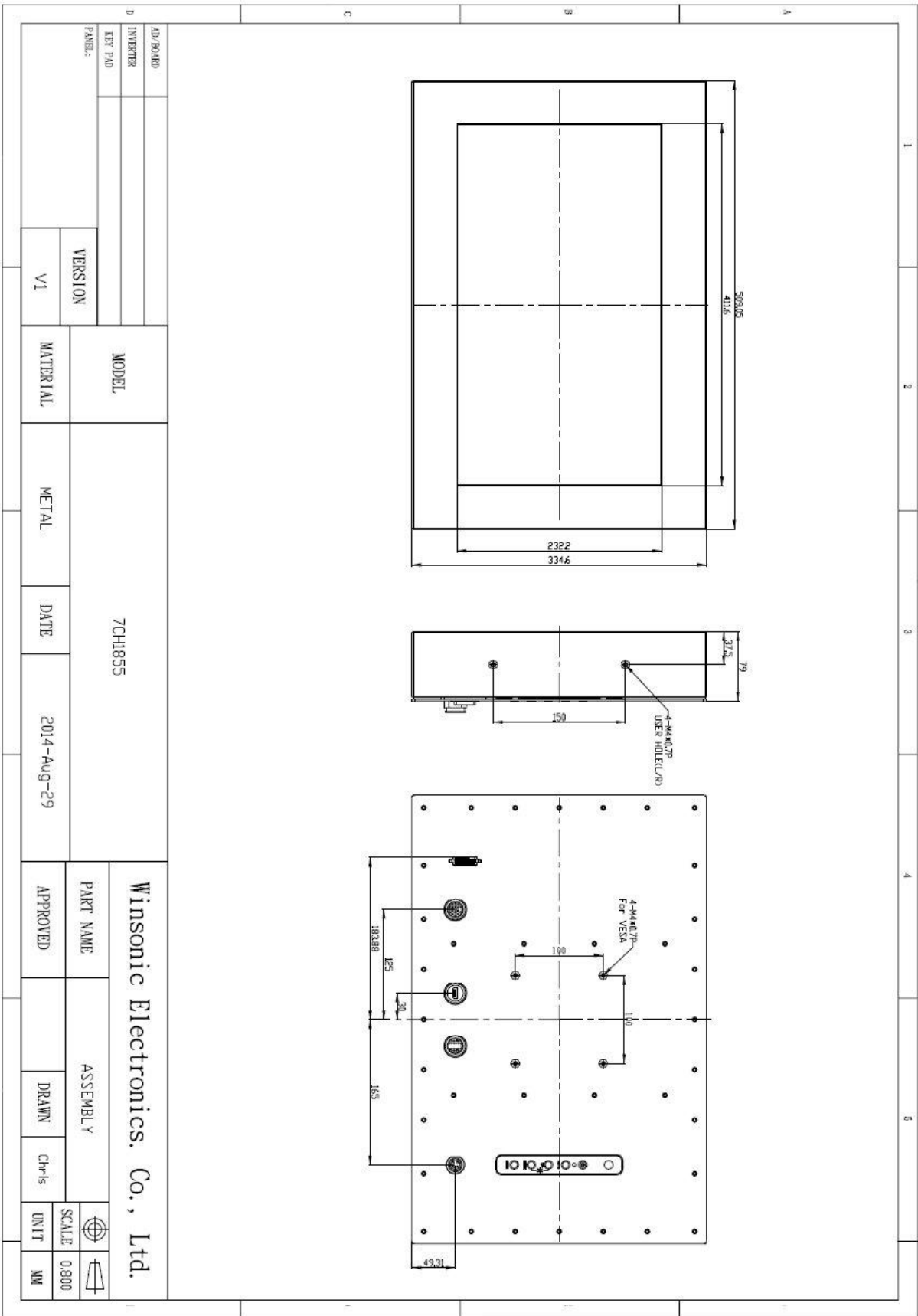
7CH1855 Full IP67 18,5" Chassis Monitor 1920x1080

- **Modular mechanical design provides flexible product configuration and easy maintenance**
- **Enclosure SECC + Powder coating**
- **IP67 compliant**
- **Custom design available**



Specifications		
Panel:	Cell Type / Glass Surface	TFT LCD / Black Anti-Glare, low reflection coating
	Aspect Ratio / Size	16 :9 / 18,5" viewable diagonal area
	Active Area / Pixel Pitch	408.96 (H) x 230.4 (V) / 0.231(H) x 0.231(V) mm
	Native Res. / Colors	1920 (H) x 1080 (V) / 16.7M
	Brightness / Contrast	350 cd/m2 (typ) / 1000:1
	Response Time	< 20 ms
	Viewing Angle	H. 178° (-89° ~ + 89°), V. 178° (-89° ~+ 89°)
	Light Source	LED, Long Life 35.000 hrs (typ)
Input Sources:	Audio System	N/A
Input Terminals:	1 x VGA, 1 x DC Power	
Convenient Features:	Auto Calibration, Back Light Adjustment, Plug & Play (VESA DDC/CI, DDC 2B) OSD Multi Languages, Wall Mount Ready (VESA 100 x 100 mm)	
Power:	12 VDC in. External Power Supply with universal / Auto-Sensing, AC 90 to 260 V, 50 / 60 Hz	
Power cons.	Operation / Power	18 watt, < 1 watt (Support DPMS)
Operating Temp.:	Temperature / Humidity	-20°C ~ 70°C, 10% ~ 90% (no condensation)
Storage Temp.:	Temperature / Humidity	-30°C ~ 80°C, 10% ~ 90% (no condensation)
Weight:	N.W. / G.W	6 kg / 7 kg
Options:	Touch Resistive Touch Capacitive Touch SAW Touch Infrared Touch	Enhanced Panel High Brightness Sunlight Readable Protection Glass
		Others Digital Signage Motion Sensor Light Sensor Auto-Dimming SV+AV, DVI, HDMI, DP etc.

Errors and omissions excepted.



AD BOARD		MODEL		7CH1855		PART NAME		Winsonic Electronics. Co., Ltd.	
INVERTER						APPROVED	ASSEMBLY		
KEY PAD		MATERIAL	METAL	DATE	2014-Aug-29	DRAWN	CH-15	SCALE	0.800
PANEL:		VERSION				UNIT	MM		
		V1							

Full-size drawing available on request.