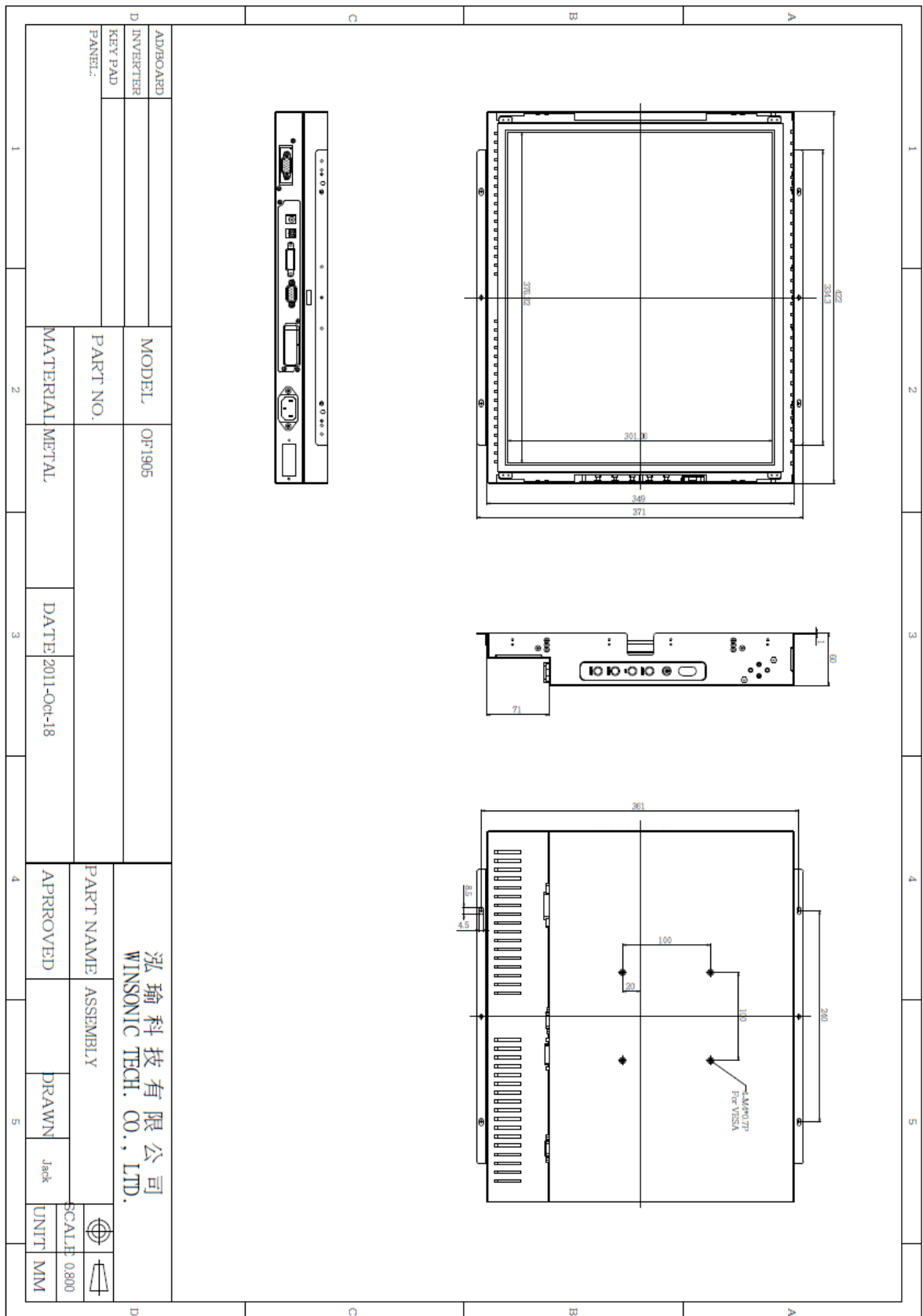


## OF1905 Open Frame 19" Monitor, 1280x1024

- **Modular mechanical design provides flexible product configuration and easy maintenance**
- **Optional built-in touch screen for interactive applications**
- **Optional auto-brightness sensor offers application by day and night**
- **Optional with different frames (Chassis Type, Chassis Mount, Panel Mount, Rack Mount)**



Specifications			
<b>Panel:</b>	Cell Type / Glass Surface	TFT LCD / Black Anti-Glare, low reflection coating	
	Aspect Ratio / Size	5:4 / 19" viewable diagonal area	
	Active Area / Pixel Pitch	376.3 (H) x 301.1 (V) / 0.294 (H) x 0.294 (V) mm	
	Native Res. / Colors	1280 (H) x 1024 (V) / 16.7 M	
	Brightness / Contrast	250 cd/m2 (typ) / 800:1	
	Response Time	< 5 ms	
	Viewing Angle	H. 170° (-85° ~ + 85°), V. 160° (-80° ~+ 80°)	
	Light Source	LED, Long Life 35.000 hrs (typ)	
<b>Input Sources:</b>	Audio System	2W Amplifier	
<b>Input Terminals:</b>	1 x VGA (15 Pin Female D-SUB) 1x PC Audio (Stereo headphone Jack) 1 x DC Power Plug		
<b>Convenient Features:</b>	Auto Calibration, Back Light Adjustment, Plug & Play (VESA DDC/CI, DDC 2B) OSD Multi Languages, Wall Mount Ready (VESA 100 x 100 mm )		
<b>Power:</b>	Internal power supply with universal / Auto-Sensing, AC 90 to 260 V, 50 / 60 Hz		
<b>Power cons.</b>	Operation / Power	33 watt, < 2 watt (Support DPMS)	
<b>Operating:</b>	Temperature / Humidity	0°C ~ 50°C, 10% ~ 90% (no condensation)	
<b>Storage:</b>	Temperature / Humidity	-20°C ~ 60°C, 10% ~ 90% (no condensation)	
<b>Dimensions:</b>	Physical	WxHxD = 422 x 371 x 61 (mm)	
	Carton	TBA	
<b>Weight:</b>	N.W. / G.W	6 kg / 7 kg	
<b>Options:</b>	<b>Touch</b>	<b>Enhanced Panel</b>	<b>Others</b>
	Resistive Touch Capacitive Touch SAW Touch Infrared Touch	High Brightness Wide Temperature Sunlight Readable Protection Glass	Digital Signage Motion Sensor Light Sensor Auto-Dimming SV+AV, DVI, HDMI



Full size drawing available on request