

OF2385 Open Frame 23,8" Monitor 1920x1080

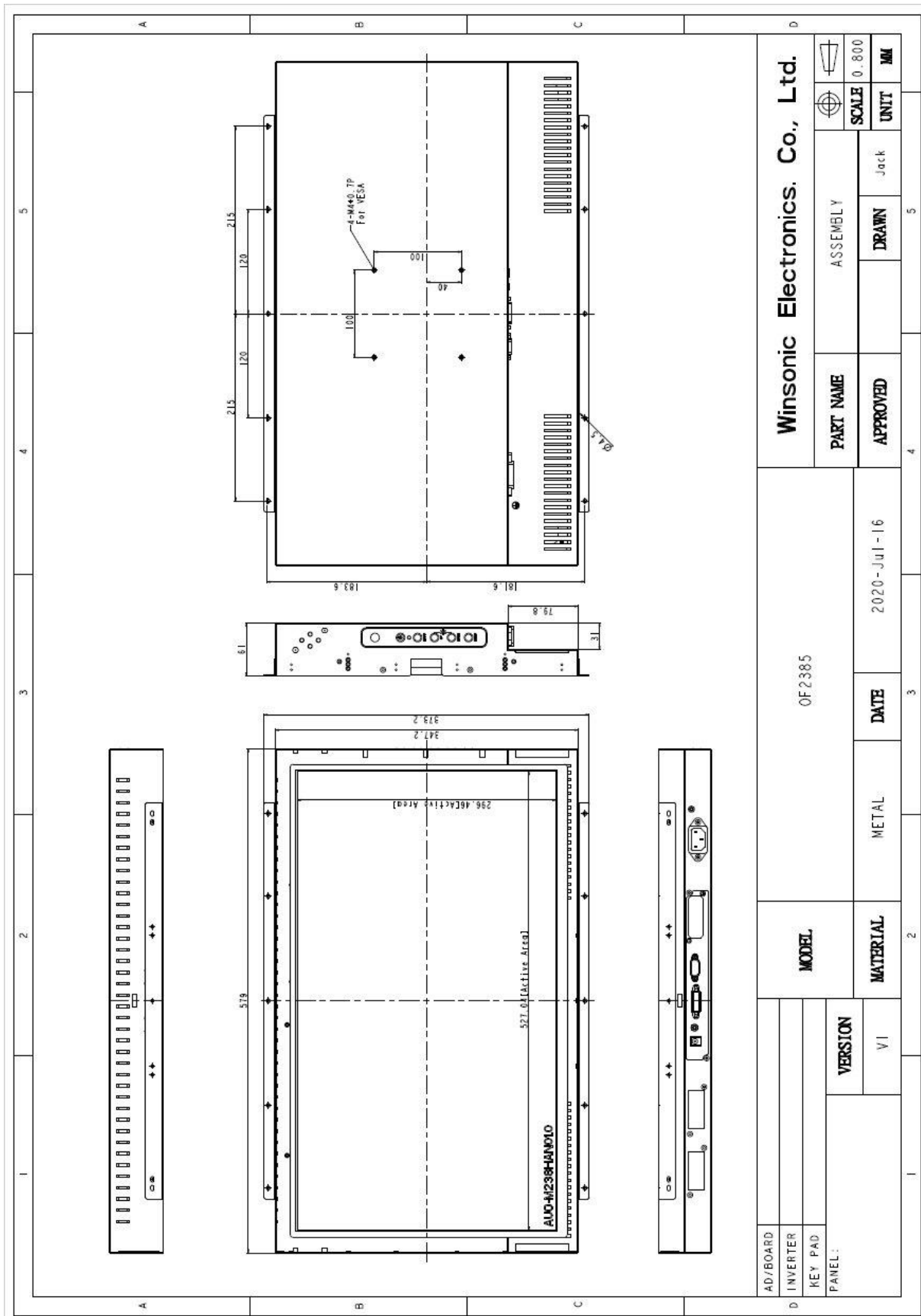
- **Modular mechanical design provides flexible product configuration and easy maintenance**
- **Optional built-in touch screen for interactive applications**
- **Optional auto-brightness sensor offers application by day and night**
- **Optional with different frames (Chassis Mount, Chassis Type, Rack Mount, Panel Mount etc.)**



Specifications

Panel:	Cell Type / Glass Surface	TFT LCD / Black Anti-Glare, low reflection coating	
	Aspect Ratio / Size	Wide / 23.8" viewable diagonal area	
	Active Area / Pixel Pitch	527.04 (H) x 296.46 (V) / 0.2745 (H) x 0.2745 (V) mm	
	Native Res. / Colors	1920 (H) x 1080 (V) / 16.7M	
	Brightness / Contrast	250 cd/m2 (typ) / 3.000:1	
	Response Time	< 16 ms	
	Viewing Angle	Horiz. 178° (-89° ~ + 89°), Vert. 178° (-89° ~ + 89°)	
	Light Source	N/A	
Input Sources:	Audio System	2W Speaker x 2	
Input Terminals:	1 x VGA (15 Pin Female D-SUB) 1x PC Audio (Stereo headphone Jack) 1 x DC Power Plug		
Convenient Features:	Auto Calibration, Back Light Adjustment, Plug & Play (VESA DDC/CI, DDC 2B) OSD Multi Languages, Wall Mount Ready (VESA 75 x 75 mm)		
Power:	Internal power supply with universal / Auto-Sensing, AC 90 to 260 V, 50 / 60 Hz		
Power cons.	Operation / Power	13.4 watt, < 1 watt (Support DPMS)	
Operating:	Temperature / Humidity	0°C ~ 50°C / 10% ~ 90% (no condensation)	
Storage:	Temperature / Humidity	-20°C ~ 60°C / 10% ~ 90% (no condensation)	
Dimensions:	Physical	WxHxD = see drawing	
	Carton	WxHxD = TBD	
Weight:	N.W. / G.W	12 kg / 13.5 kg	
Options:	Touch	Enhanced Panel	Others
	Resistive Touch Capacitive Touch SAW Touch Infrared Touch	Protection Glass High Brightness Wide Temperature Sunlight Readable	Digital Signage Motion Sensor Light Sensor Auto-Dimming SV+AV, DVI, HDMI

Errors and omissions excepted



Full size drawing available on request!