

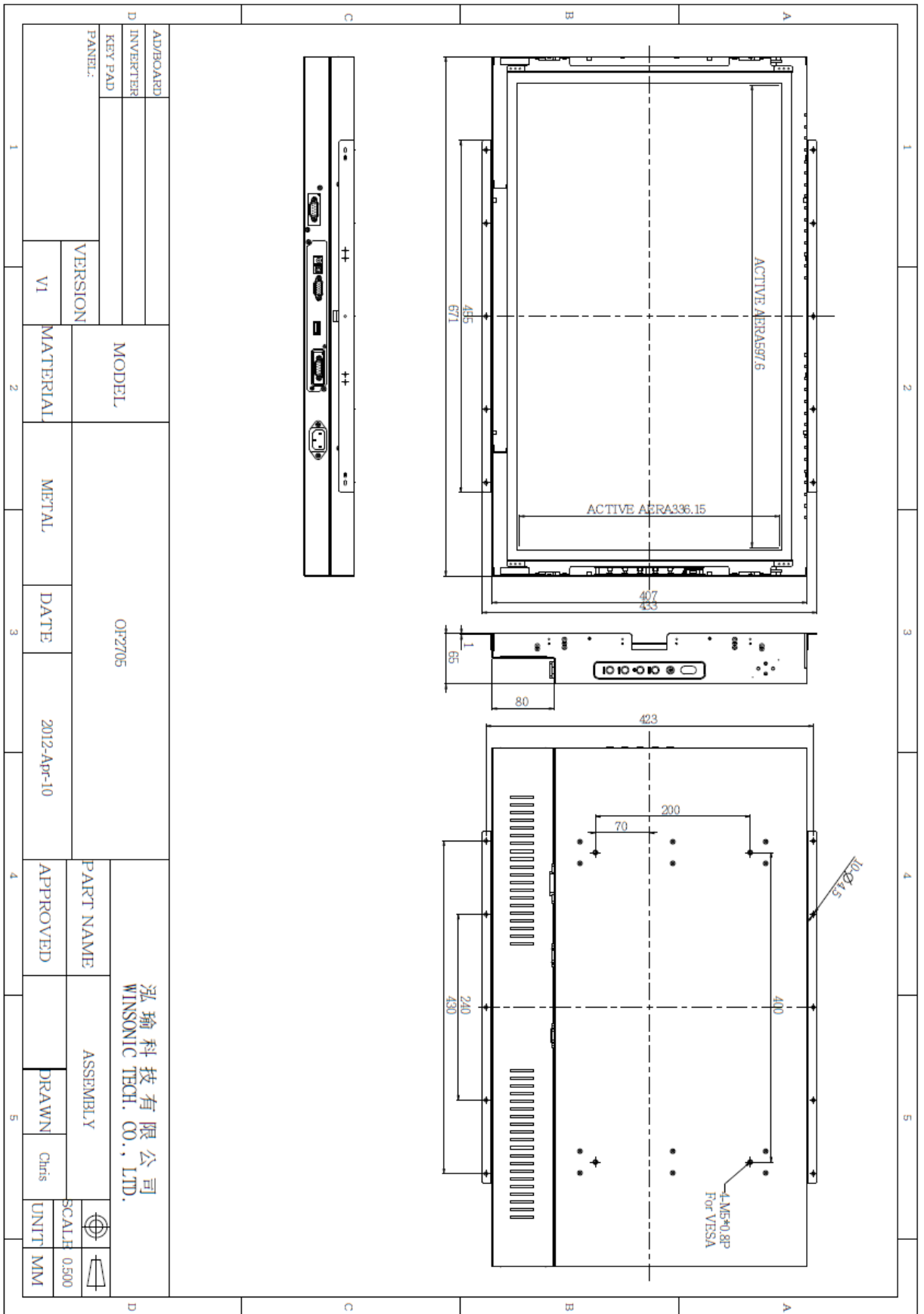
## OF2705 Open Frame 27" Monitor 1920x1080

- **Modular mechanical design provides flexible product configuration and easy maintenance**
- **Optional built-in touch screen for interactive applications**
- **Optional auto-brightness sensor offers application by day and night**
- **Optional with different frames (Chassis Type, Chassis Mount, Panel Mount, Rack Mount)**



### Specifications

<b>Panel:</b>	Cell Type / Glass Surface	TFT LCD / Black Anti-Glare, low reflection coating	
	Aspect Ratio / Size	Wide / 27" viewable diagonal area	
	Active Area / Pixel Pitch	597.89 (H) x 336.31 (V) / 0.3114(H) x 0.3114(V) mm	
	Native Res. / Colors	1920 (H) x 1080 (V) / 16.7 Million	
	Brightness / Contrast	300 cd/m2 (typ) / 1000:1	
	Response Time	< 5 ms	
	Viewing Angle	H. 170° (-85° ~ + 85°), V. 160° (-80° ~+ 80°)	
	Light Source	LED, Long Life 35.000 hrs (typ)	
<b>Input Sources:</b>	Audio System	Speaker x 2	
<b>Input Terminals:</b>	1 x VGA, 1 x hDMI, 1 x DVI, 1x PC Audio (Stereo headphone Jack) 1 x DC Power Plug		
<b>Convenient Features:</b>	Auto Calibration, Back Light Adjustment, Plug & Play (VESA DDC/CI, DDC 2B) OSD Multi Languages, Wall Mount Ready (VESA 400 x 200 mm )		
<b>Power:</b>	Internal power supply with universal / Auto-Sensing, AC 90 to 260 V, 50 / 60 Hz		
<b>Power cons.</b>	Operation / Power	43 watt, < 1 watt (Support DPMS)	
<b>Operating:</b>	Temperature / Humidity	0°C ~ 50°C, 10% ~ 90% (no condensation)	
<b>Storage:</b>	Temperature / Humidity	-20°C ~ 60°C, 10% ~ 90% (no condensation)	
<b>Dimensions:</b>	Physical	WxHxD = see drawing	
	Carton	WxHxD = 895 x 605 x 225 mm	
<b>Weight:</b>	N.W. / G.W	14.5 kg / 16 kg	
<b>Options:</b>	<b>Touch</b>	<b>Enhanced Panel</b>	<b>Others</b>
	Capacitive Touch	High Brightness	Digital Signage
	SAW Touch	Wide Temperature	Motion Sensor
Infrared Touch	Sunlight Readable	Light Sensor	
	Protection Glass	Auto-Dimming	
	Wide viewing angle	SV+AV, DVI, HDMI	



Full-size drawing available on request!