

OF4204 Open Frame 42" Monitor 1920x1080

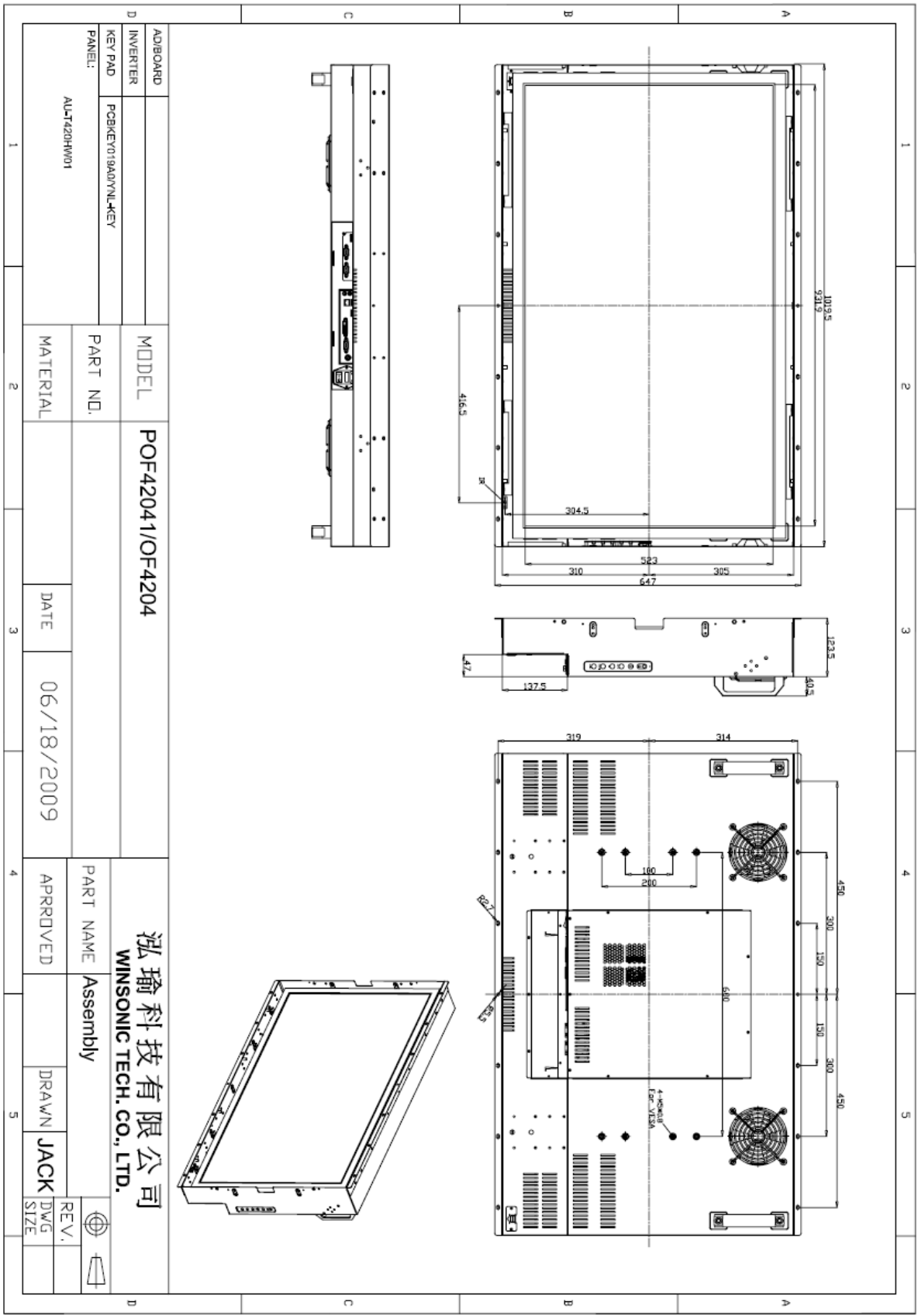
- **Built-in fans to improve system cooling allow up to 24-hours a day usage**
- **Optional built-in touch screen for interactive applications**
- **Optional auto-brightness sensor offers application by day and night**
- **Optionally with different frames (Chassis Mount, Chassis Type, Panel Mount, Rack Mount)**



Specifications

Panel:	Cell Type / Glass Surface	TFT LCD / Black Anti-Glare, low reflection coating	
	Aspect Ratio / Size	Wide / 42" viewable diagonal area	
	Active Area / Pixel Pitch	930.24 (H) x 523.26 (V) / 0.4845(H) x 0.4845(V) mm	
	Native Res. / Colors	1920 (H) x 1080 (V) / 16.7M (Option: Höhere Auflösung)	
	Brightness / Contrast	350 cd/m2 (typ) / 3000:1	
	Response Time	< 8 ms	
	Viewing Angle	H. 178° (-89° ~ + 89°), V. 178° (-89° ~+ 89°)	
	Light Source	LED, Long Life 50.000 hrs (typ)	
Input Sources:	Audio System	2 x 2W Speaker	
Input Terminals:	1 x VGA, 1 x HDMI, 1 x DVI, 1x PC Audio (Stereo headphone Jack) 1 x Power		
Convenient Features:	Auto Calibration, Back Light Adjustment, Plug & Play (VESA DDC/CI, DDC 2B) OSD Multi Languages, Wall Mount Ready (VESA 600 x 200 mm)		
Power:	Internal power supply with universal / Auto-Sensing, AC 90 to 260 V, 50 / 60 Hz		
Power cons.	Operation / Power	142 watt, < 1 watt (Support DPMS)	
Operating:	Temperature / Humidity	0°C ~ 50°C, 10% ~ 90% (no condensation)	
Storage:	Temperature / Humidity	-20°C ~ 60°C, 10% ~ 90% (no condensation)	
Dimensions:	Physical	With Flanges: WxHxD = 1019.5 x 633 x 164 mm	
		Without Flanges: WxHxD = 1019.5 x 615 x 164 mm	
	Carton	WxHxD = 1145 x 755 x 240 mm	
Weight:	N.W. / G.W	30.5 kg / 32.5 kg	
Options:	Touch	Enhanced Panel	Others
	Proj. Cap. Touch SAW Touch Infrared Touch	High Brightness Wide Temperature Sunlight Readable Protection Glass	Digital Signage Motion Sensor Light Sensor Auto-Dimming SV+AV, DVI, HDMI

Errors and omissions excepted



Full-size drawing available on request!