

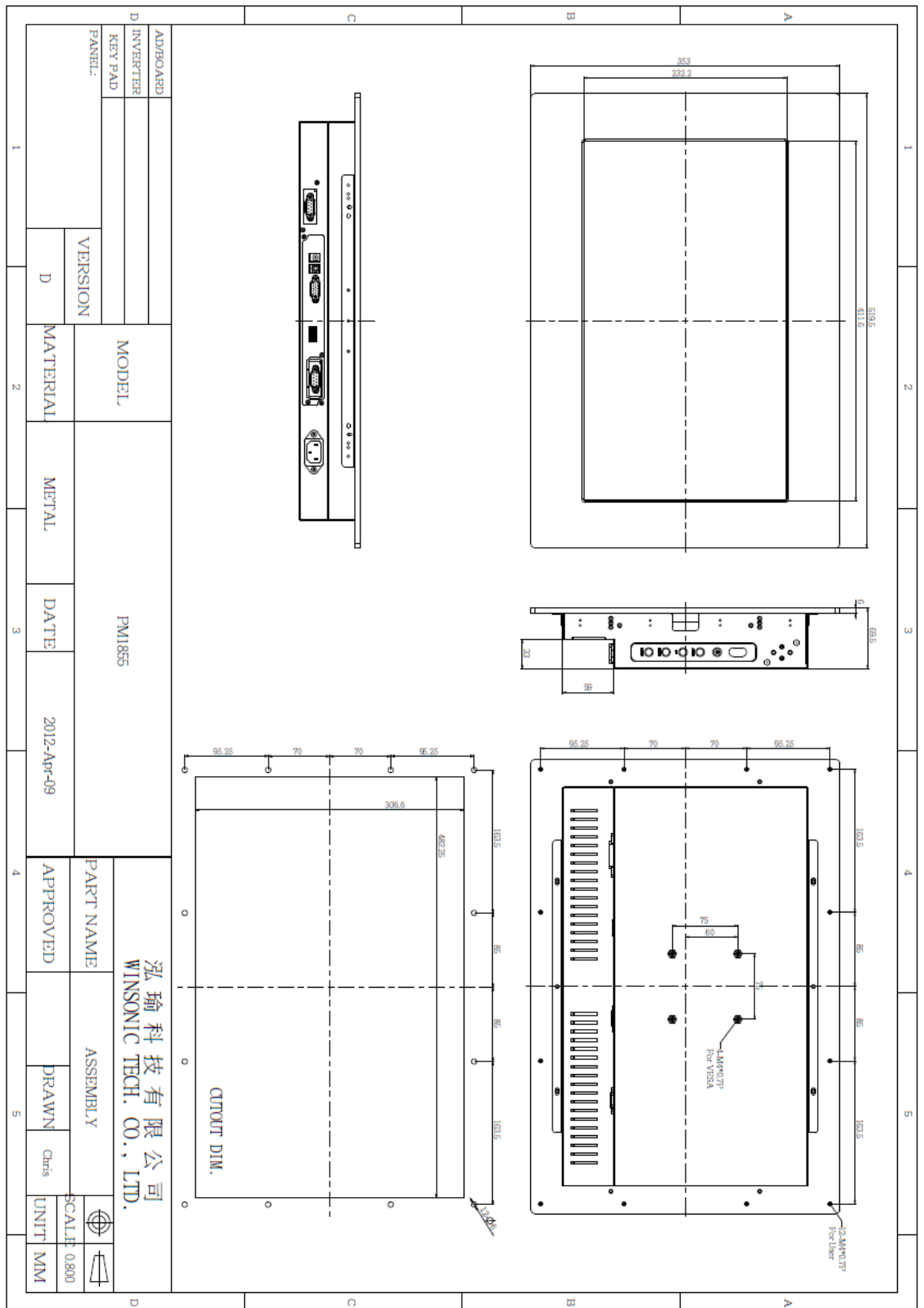
PM1855 Panel-Mount 18,5" Monitor 1920x1080

- Modular mechanical design provides flexible product configuration and easy maintenance
- Optional built-in touch screen for interactive applications
- Optional auto-brightness sensor offers application by day and night
- Optional with different frames (Open Frame, Chassis Type, Chassis Mount, Rack Mount etc.)



Specifications

Panel:	Cell Type / Glass Surface	TFT LCD / Black Anti-Glare, low reflection coating	
	Aspect Ratio / Size	Wide / 18,5" viewable diagonal area	
	Active Area / Pixel Pitch	409.8 (H) x 230.4 (V) / 0.3(H) x 0.3(V) mm	
	Native Res. / Colors	1366 (H) x 768 (V) / 16.7 Million	
	Brightness / Contrast	300 cd/m2 (typ) / 1000:1	
	Response Time	< 5 ms	
	Viewing Angle	H. 170° (-85° ~ + 85°), V. 160° (-80° ~+ 80°)	
	Light Source	CCFL, Long Life 50.000 hrs (typ)	
Input Sources:	Audio System	2W Amplifier	
Input Terminals:	1 x VGA (15 Pin Female D-SUB) 1x PC Audio (Stereo headphone Jack) 1 x DC Power Plug		
Convenient Features:	Auto Calibration, Back Light Adjustment, Plug & Play (VESA DDC/CI, DDC 2B) OSD Multi Languages, Wall Mount Ready (VESA 75 x 75 mm)		
Power:	Internal power supply with universal / Auto-Sensing, AC 90 to 260 V, 50 / 60 Hz		
Power cons.	Operation / Power	22 watt, < 1 watt (Support DPMS)	
Op. Condition	Temperature / Humidity	0°C ~ 50°C, 10% ~ 90% (no condensation)	
	Temperature / Humidity	-20°C ~ 60°C, 10% ~ 90% (no condensation)	
Dimensions:	Physical	WxHxD = TBD	
	Carton	WxHxD = TBD	
Weight:	N.W. / G.W	6.5 kg / 7.5 kg	
Options:	Touch	Enhanced Panel	Others
	Resistive Touch Capacitive Touch SAW Touch Protection Glass	LED Backlight High Brightness Wide Temperature Sunlight Readable	Digital Signage Motion Sensor Light Sensor Auto-Dimming SV+AV, DVI, HDMI



AD/BOARD		MODEL	PM1855		PART NAME	泓瑜科技有限公司 WINSONIC TECH. CO., LTD.					
INVERTER			MATERIAL	METAL		DATE	2012-Apr-09	APPROVED	ASSEMBLY	SCALE	0.800
KEY PAD			VERSION	D				DRAWN	Chris	UNIT	MM
PANEL											

Full-size drawing available on request!

TecSys GmbH • Karl-Theodor-Str. 70 • D- 80803 München • Tel +49 89 321 990-14 • www.tecsys.de