

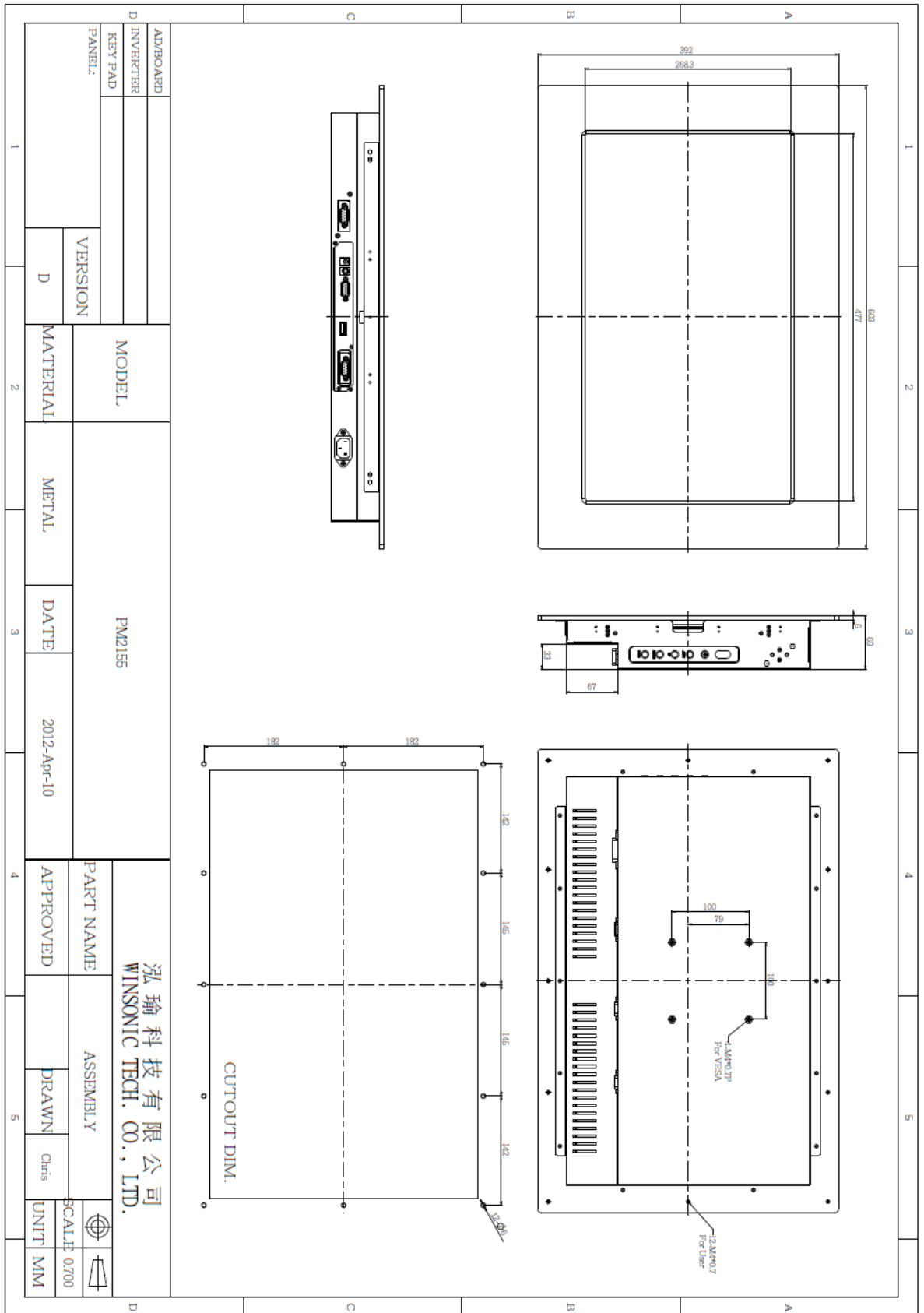
PM2155-WH25L0 Monitor / Touchmonitor

- **Modular mechanical design provides flexible product configuration and easy maintenance**
- **Optional built-in touch screen for interactive applications**
- **Optional auto-brightness sensor offers application by day and night**
- **Optional with different frames (Open Frame, Chassis Type, Chassis Mount, Rack Mount)**



Specifications			
Panel:	Cell Type / Glass Surface	TFT LCD / Black Anti-Glare, low reflection coating	
	Aspect Ratio / Size	Wide / 21,5" viewable diagonal area	
	Active Area / Pixel Pitch	476.64 (H) x 268.11(V) / 0.248(H) x 0.248(V) mm	
	Native Res. / Colors	1920 (H) x 1080 (V) / 16.7 Million	
	Brightness / Contrast	250 cd/m2 (typ) / 1000:1	
	Response Time	< 5 ms	
	Viewing Angle	H. 170° (-85° ~ + 85°), V. 160° (-80° ~+ 80°)	
	Light Source	LED, Long Life 35.000 hrs (typ)	
Input Sources:	Audio System	2W Speaker x 2	
Input Terminals:	1 x VGA (15 Pin Female D-SUB) 1x PC Audio (Stereo headphone Jack) 1 x DC Power Plug		
Convenient Features:	Auto Calibration, Back Light Adjustment, Plug & Play (VESA DDC/CI, DDC 2B) OSD Multi Languages		
Power:	Internal power supply with universal / Auto-Sensing, AC 90 to 260 V, 50 / 60 Hz		
Power cons.	Operation / Power	27 watt, < 2 watt (Supports DPMS)	
Op. Condition	Temperature / Humidity	0°C ~ 50°C, 10% ~ 90% (no condensation)	
	Temperature / Humidity	-20°C ~ 60°C, 10% ~ 90% (no condensation)	
Dimensions:	Physical	WxHxD = 603 x 392 x 69 mm	
	Carton	WxHxD = TBD	
Weight:	N.W. / G.W	7 kg / 8 kg	
Options:	Touch	Enhanced Panel	Others
	Resistive Touch Capacitive Touch SAW Touch Infrared Touch Protection Glass	High Brightness Wide Temperature Sunlight Readable	Digital Signage Motion Sensor Light Sensor Auto-Dimming SV+AV, DVI, HDMI

Errors and omissions excepted



AD/BOARD		MODEL		PM2155		PART NAME		泓瑜 科技有限公司	
INVERTER		MATERIAL		METAL		DATE		2012-Apr-10	
KEY PAD		VERSION		DATE		APPROVED		ASSEMBLY	
PANEL:		D		DATE		APPROVED		DRAWN	
VERSION		MATERIAL		DATE		APPROVED		Chris	
D		MATERIAL		DATE		APPROVED		UNIT	
D		MATERIAL		DATE		APPROVED		MM	

WINSONIC TECH. CO., LTD.

SCALE: 0.700