

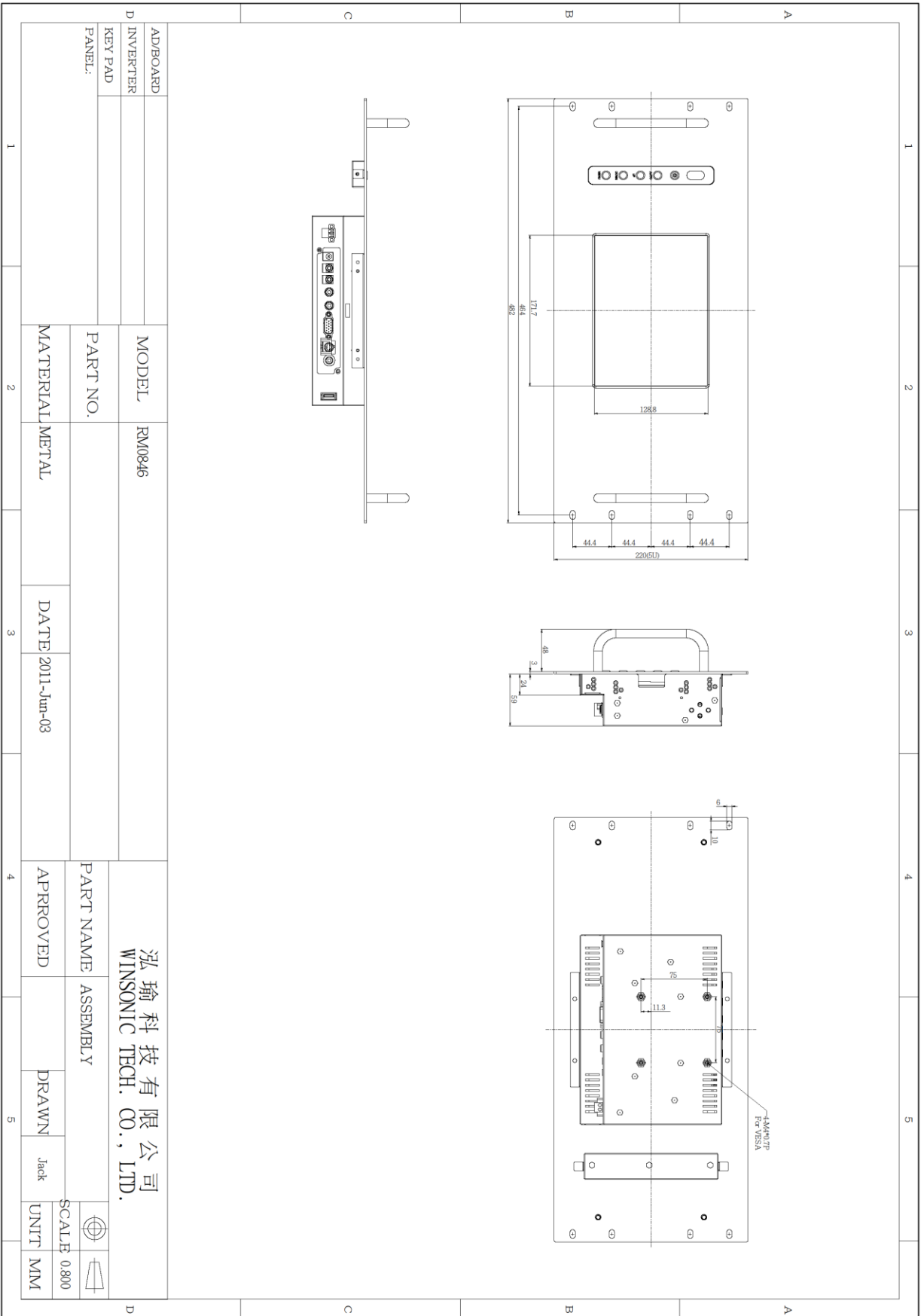
## RM0846 Rack Mount Monitor 8" 800x600

- **Modular mechanical design provides flexible product configuration and easy maintenance**
- **Optional built-in touch screen for interactive applications**
- **Optional auto-brightness sensor offers application by day and night**
- **Optional with different frames (Open Frame, Chassis Type, Chassis Mount, Panel Mount)**



### Specifications

<b>Panel:</b>	Cell Type / Glass Surface	TFT LCD / Black Anti-Glare, low reflection coating	
	Aspect Ratio / Size	4:3 / 8.4" viewable diagonal area	
	Active Area / Pixel Pitch	170.4 (H) x 127.8 (V) / 0.264 (H) x 0.264 (V) mm	
	Native Res. / Colors	800 (H) x 600 (V) / 262 K	
	Brightness / Contrast	350 cd/m2 (typ) / 600:1	
	Response Time	< 30 ms	
	Viewing Angle	H. 160° (-80° ~ +80°), V. 140° (-70° ~ +70°)	
	Light Source	LED, Long Life 35.000 hrs (typ)	
<b>Input Sources:</b>	Audio System	2W Speaker x 2	
<b>Input Terminals:</b>	1 x VGA (15 Pin Female D-SUB) 1x PC Audio (Stereo headphone Jack) 1 x DC Power Plug		
<b>Convenient Features:</b>	Auto Calibration, Back Light Adjustment, Plug & Play (VESA DDC/CI, DDC 2B) OSD Multi Languages, Wall Mount Ready (VESA 100 x 100 mm )		
<b>Power:</b>	External AC-to-12VDC power adapter with universal / Auto-Sensing, AC 90 to 260 V, 50 / 60 Hz		
<b>Power cons.</b>	Operation / Power	9 watt, < 2 watt (Support DPMS)	
<b>Operating:</b>	Temperature / Humidity	0°C ~ 50°C, 10% ~ 90% (no condensation)	
<b>Storage:</b>	Temperature / Humidity	-20°C ~ 60°C, 10% ~ 90% (no condensation)	
<b>Dimensions:</b>	Physical	WxHxD = 482 x 220 x 68 (mm) <b>For 19" Rack 5U</b>	
	Carton	WxHxD = TBD	
<b>Weight:</b>	N.W. / G.W	4 kg / 5 kg	
<b>Options:</b>	<b>Touch</b>	<b>Enhanced Panel</b>	<b>Others</b>
	Resistive Touch Capacitive Touch SAW Touch	Protective glass High Brightness Wide Temperature Sunlight Readable	Digital Signage Motion Sensor Light Sensor Auto-Dimming SV+AV, DVI, HDMI



AD/BOARD	MODEL	RM0846	PART NAME		ASSEMBLY		SCALE	
D INVERTER	PART NO.		APPROVED		DRAWN	Jack	UNIT	MM
KEY PAD	MATERIAL	METAL	DATE	2011-Jun-03				
PANEL:								

弘瑜 科技 有限 公司  
WINSONIC TECH. CO., LTD.