

RM1565 Rack Mount 15" Monitor 1920x1080

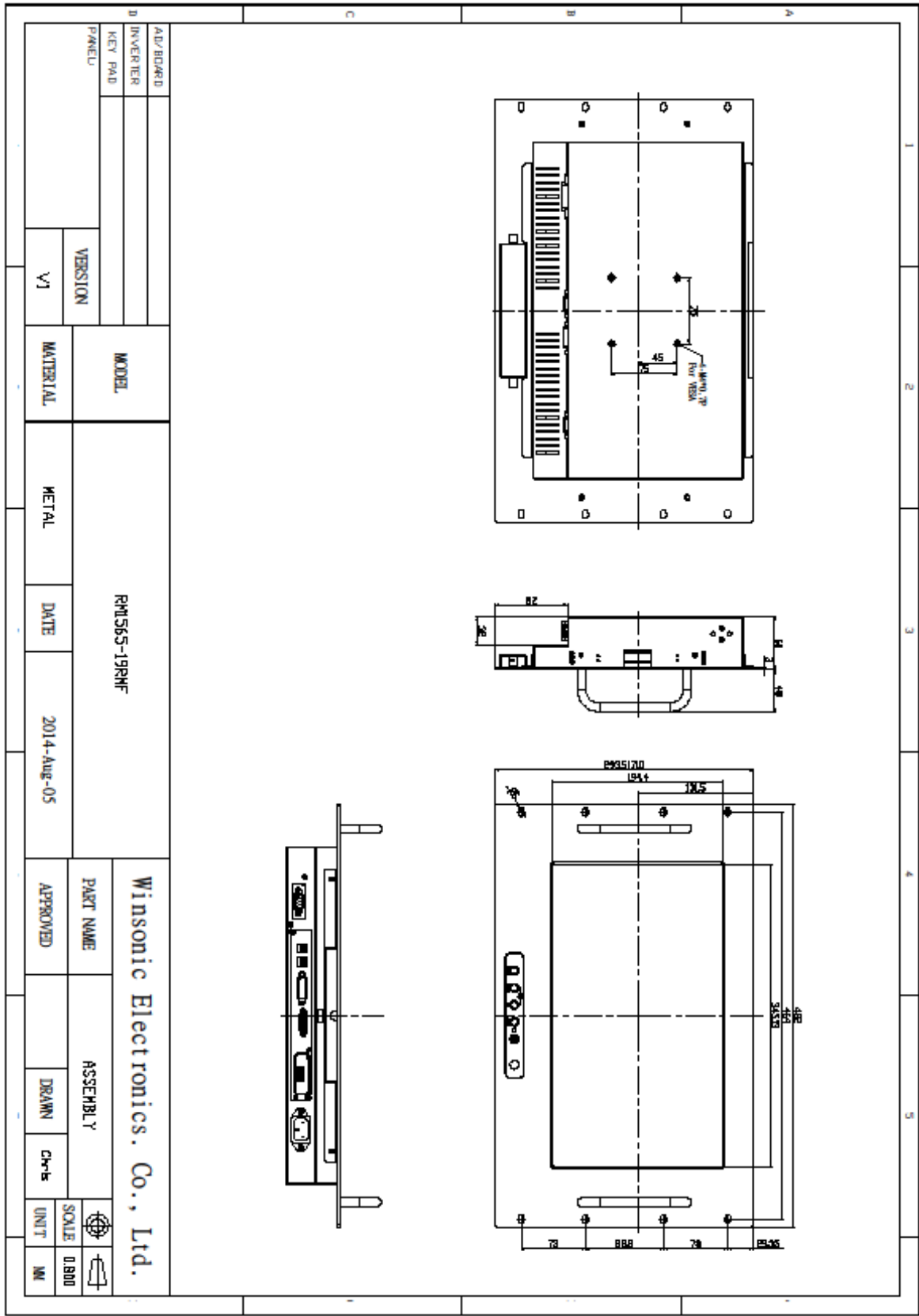
- **Modular mechanical design provides flexible product configuration and easy maintenance**
- **Optional built-in touch screen for interactive applications**
- **Optional auto-brightness sensor offers application by day and night**
- **Optional with different frames (Chassis Type, Chassis Mount, Panel Mount, Open Frame)**



Specifications

| | | | |
|-----------------------------|--|--|--|
| Panel: | Cell Type / Glass Surface | TFT LCD / Black Anti-Glare, low reflection coating | |
| | Aspect Ratio / Size | Wide / 15.6" viewable diagonal area | |
| | Active Area / Pixel Pitch | 344.16 (H) x 193.59 (V) / 0.1793 (H) x 0.1793 (V) mm | |
| | Native Res. / Colors | 1920 (H) x 1080 (V) / 16.7M | |
| | Brightness / Contrast | 250 cd/m2 (typ) / 500:1 | |
| | Response Time | < 12 ms | |
| | Viewing Angle | Horiz. 90° (-45° ~ + 45°), Vert. 65° (-40° ~+ 25°) | |
| | Light Source | LED, Long Life 35.000 hrs (typ) | |
| Input Sources: | Audio System | 2W Speaker x 2 | |
| Input Terminals: | 1 x VGA (15 Pin Female D-SUB) 1x PC Audio (Stereo headphone Jack) 1 x DC Power Plug | | |
| Convenient Features: | Auto Calibration, Back Light Adjustment, Plug & Play (VESA DDC/CI, DDC 2B) OSD Multi Languages, Wall Mount Ready (VESA 75 x 75 mm) | | |
| Power: | External AC-to-12VDC power adapter with universal / Auto-Sensing, AC 90 to 260 V, 50 / 60 Hz | | |
| Power cons. | Operation / Power | 13 watt, < 1 watt (Support DPMS) | |
| Operating: | Temperature / Humidity | 0°C ~ 50°C / 10% ~ 90% (no condensation) | |
| Storage: | Temperature / Humidity | -20°C ~ 60°C / 10% ~ 90% (no condensation) | |
| Dimensions: | Physical | WxHxD = see drawing | 19" Rack 7U |
| | Carton | WxHxD = TBD | |
| Weight: | N.W. / G.W | 4.5 kg / 5.5 kg | |
| Options: | Touch | Enhanced Panel | Others |
| | Resistive Touch Capacitive Touch SAW Touch Infrared Touch | Protection Glass High Brightness Wide Temperature Sunlight Readable | Digital Signage Motion Sensor Light Sensor Auto-Dimming SV+AV, DVI, HDMI |

Errors and omissions excepted



Full size drawing available on request!