

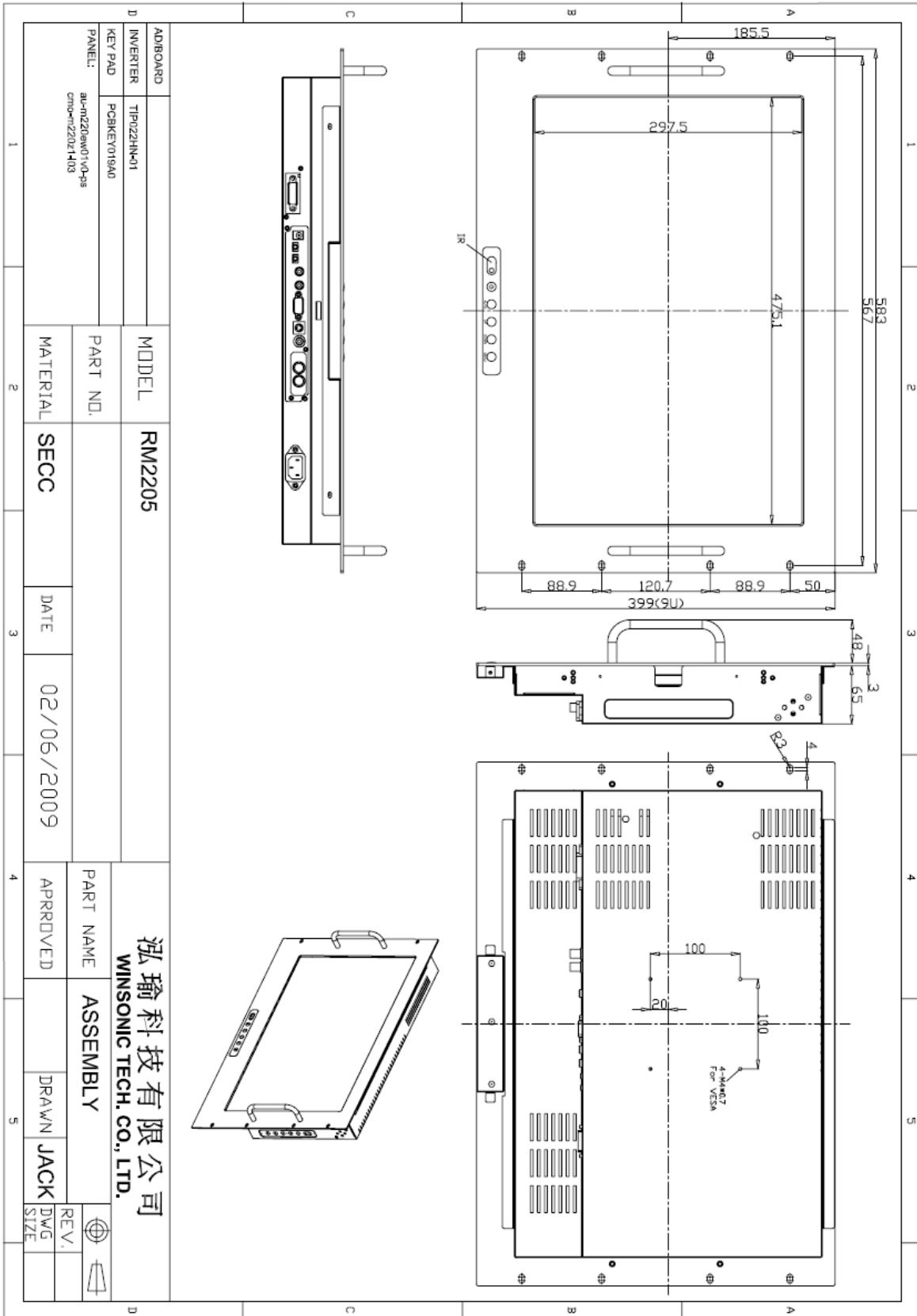
RM2205 Rack Mount 22" Monitor 1680x1050

- Modular mechanical design provides flexible product configuration and easy maintenance
- Optional built-in touch screen for interactive applications
- Optional auto-brightness sensor offers application by day and night
- Optional with different frames (Open Frame, Chassis Mount, Panel Mount, Chassis Type)



Specifications		
Panel:	Cell Type / Glass Surface	TFT LCD / Black Anti-Glare, low reflection coating
	Aspect Ratio / Size	16:10 Wide / 22" viewable diagonal area
	Active Area / Pixel Pitch	473.8 (H) x 296.1 (V) / 0.282 (H) x 0.282 (V) mm
	Native Res. / Colors	1680 (H) x 1050 (V) / 16.7M
	Brightness / Contrast	250 cd/m2 (typ) / 1.000:1
	Response Time	< 5 ms
	Viewing Angle	Horiz. 170° (-85° ~ + 85°), Vert. 160° (-80° ~ + 80°)
	Light Source	LED, Long Life 35.000 hrs (typ)
Input Sources:	Audio System	-
Input Terminals:	1 x VGA (15 Pin Female D-SUB) 1x PC Audio (Stereo headphone Jack) 1 x DC Power Plug	
Convenient Features:	Auto Calibration, Back Light Adjustment, Plug & Play (VESA DDC/CI, DDC 2B) OSD Multi Languages, Wall Mount Ready (VESA 75 x 75 mm)	
Power:	Internal AC 90 to 260 V, 50/60 Hz	
Power cons.	Operation / Power	25 watt, < 1 watt (Support DPMS)
Operating:	Temperature / Humidity	0°C ~ 50°C / 10% ~ 90% (no condensation)
Storage:	Temperature / Humidity	-20°C ~ 60°C / 10% ~ 90% (no condensation)
Dimensions:	Physical	WxHxD = see drawing For 23" Rack 9U
	Carton	WxHxD = TBD
Weight:	N.W. / G.W	9 kg / 10.5 kg
Options:	Touch	Enhanced Panel
	Resistive Touch Capacitive Touch SAW Touch Infrared Touch	Protection Glass High Brightness Wide Temperature Sunlight Readable
		Others Digital Signage Motion Sensor Light Sensor Auto-Dimming SV+AV, DVI, HDMI

Errors and omissions excepted



Full size drawing available on request!