

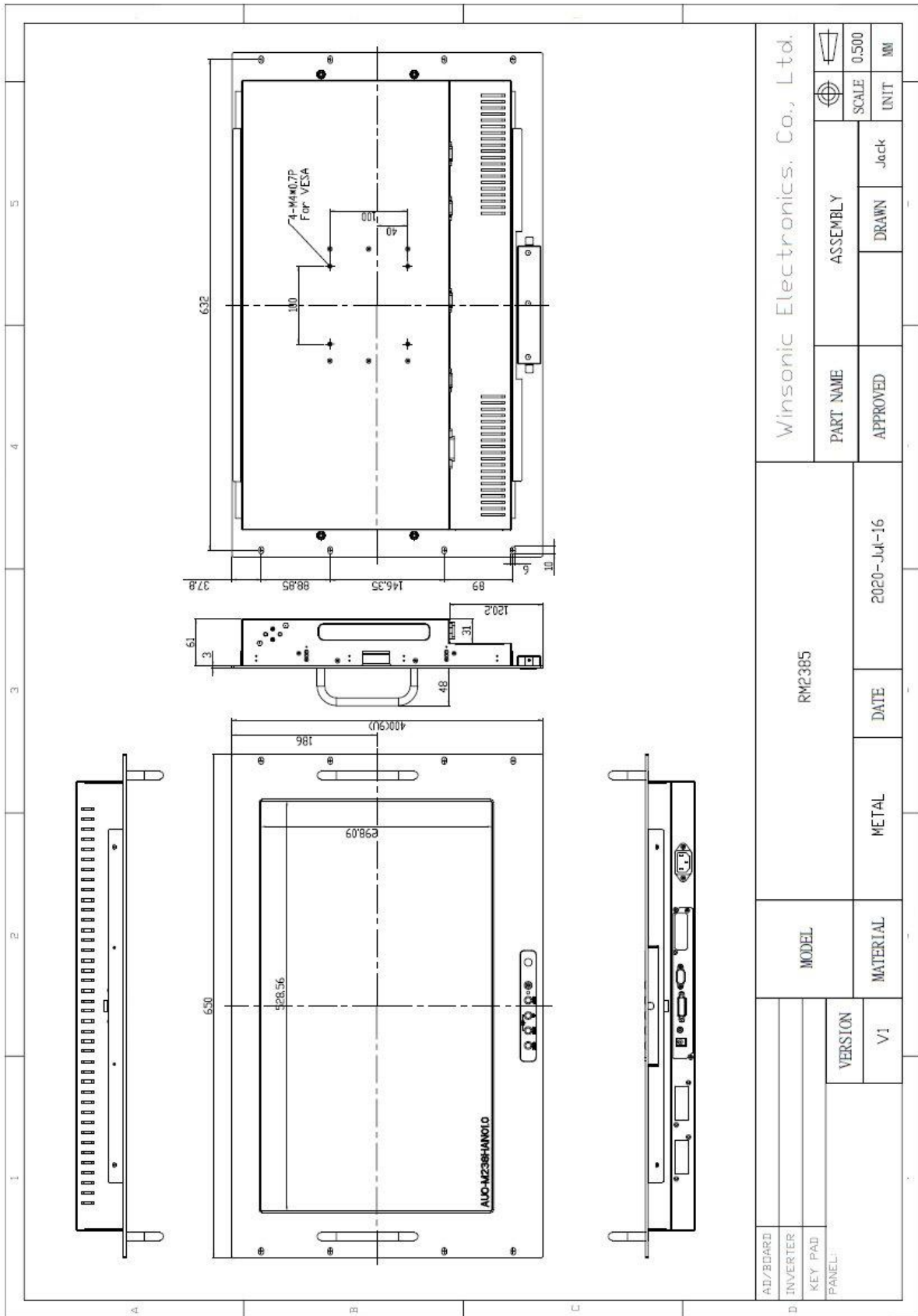
RM2385-WH25L2 Rack-Mount Monitor 1920x1080

- **Modular mechanical design provides flexible product configuration and easy maintenance**
- **Optional built-in touch screen for interactive applications**
- **Optional auto-brightness sensor offers application by day and night**
- **Optional with different frames (Open Frame, Chassis Type, Chassis Mount, Panel Mount etc.)**



| Specifications | | | |
|-----------------------------|---|--|--|
| Panel: | Cell Type / Glass Surface | TFT LCD / Black Anti-Glare, low reflection coating | |
| | Aspect Ratio / Size | Wide / 23.8" viewable diagonal area | |
| | Active Area / Pixel Pitch | 527.04 (H) x 296.46(V) / 0.2745(H) x 0.2745(V) mm | |
| | Native Res. / Colors | 1920 (H) x 1080 (V) / 16.7 Million | |
| | Brightness / Contrast | 250 cd/m ² (typ) / 3000:1 | |
| | Response Time | < 16 ms | |
| | Viewing Angle | H. 178° (-89° ~ + 89°), V. 178° (-89° ~+ 89°) | |
| | Light Source | LED, Long Life 35.000 hrs (typ) | |
| Input Sources: | Audio System | 2W Speaker x 2 | |
| Input Terminals: | 1 x VGA (15 Pin Female D-SUB) 1x PC Audio (Stereo headphone Jack) 1 x DC Power Plug | | |
| Convenient Features: | Auto Calibration, Back Light Adjustment, Plug & Play (VESA DDC/CI, DDC 2B) OSD Multi Languages, Wall Mount Ready (VESA 100 x 100 mm) | | |
| Power: | Internal power supply with universal / Auto-Sensing, AC 90 to 260 V, 50 / 60 Hz | | |
| Power cons. | Operation / Power | 13.4 watt, < 1 watt (Support DPMS) | |
| Operating: | Temperature / Humidity | 0°C ~ 50°C, 10% ~ 90% (no condensation) | |
| Storage: | Temperature / Humidity | -20°C ~ 60°C, 10% ~ 90% (no condensation) | |
| Dimensions: | Physical | See drawing. (For 23" width rack !) | |
| | Carton | WxHxD = TBD | |
| Weight: | N.W. / G.W | 12 kg / 13.5 kg | |
| Options: | Touch | Enhanced Panel | Others |
| | Resistive Touch Capacitive Touch SAW Touch | High Brightness Wide Temperature Sunlight Readable | Digital Signage Motion Sensor Light Sensor Auto-Dimming SV+AV, DVI, HDMI |

Errors and omissions excepted



Full-size drawing available on request !

TecSys GmbH • Karl-Theodor-Str. 70 • D- 80803 München • Tel +49 89 321 990-14 • www.tecsys.de