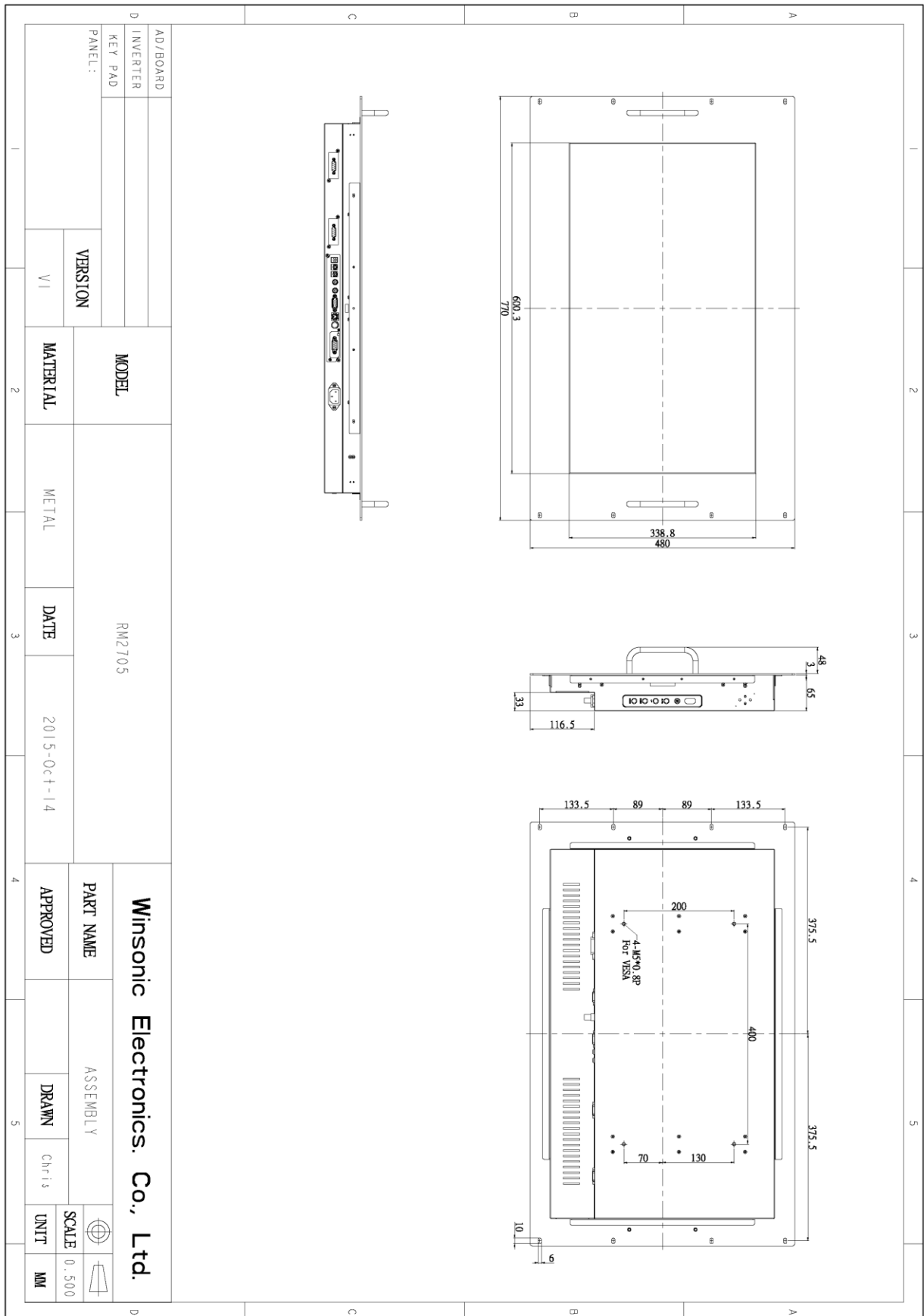


RM2705 Rack Mount 27" Monitor 1920x1080

- Modular mechanical design provides flexible product configuration and easy maintenance
- Optional built-in touch screen for interactive applications
- Optional auto-brightness sensor offers application by day and night
- Optional with different frames (Chassis Type, Chassis Mount, Open Frame, Panel Mount)



Specifications			
Panel:	Cell Type / Glass Surface	TFT LCD / Black Anti-Glare, low reflection coating	
	Aspect Ratio / Size	Wide / 27" viewable diagonal area	
	Active Area / Pixel Pitch	597.89 (H) x 336.31 (V) / 0.3114(H) x 0.3114(V) mm	
	Native Res. / Colors	1920 (H) x 1080 (V) / 16.7 Million	
	Brightness / Contrast	300 cd/m2 (typ) / 1000:1	
	Response Time	< 5 ms	
	Viewing Angle	H. 170° (-85° ~ + 85°), V. 160° (-80° ~ + 80°)	
	Light Source	LED, Long Life 35.000 hrs (typ)	
Input Sources:	Audio System	Speaker x 2	
Input Terminals:	1 x VGA, 1 x hDMI, 1 x DVI, 1x PC Audio (Stereo headphone Jack) 1 x DC Power Plug		
Convenient Features:	Auto Calibration, Back Light Adjustment, Plug & Play (VESA DDC/CI, DDC 2B) OSD Multi Languages, Wall Mount Ready (VESA 400 x 200 mm)		
Power:	Internal power supply with universal / Auto-Sensing, AC 90 to 260 V, 50 / 60 Hz		
Power cons.	Operation / Power	43 watt, < 1 watt (Support DPMS)	
Operating:	Temperature / Humidity	0°C ~ 50°C, 10% ~ 90% (no condensation)	
Storage:	Temperature / Humidity	-20°C ~ 60°C, 10% ~ 90% (no condensation)	
Dimensions:	Physical	WxHxD = see drawing For 29" width rack !	
	Carton	WxHxD = 895 x 605 x 225 mm	
Weight:	N.W. / G.W	14.5 kg / 16 kg	
Options:	Touch	Enhanced Panel	Others
	Capacitive Touch	High Brightness	Digital Signage
	SAW Touch	Wide Temperature	Motion Sensor
Infrared Touch	Sunlight Readable	Light Sensor	
	Protection Glass	Auto-Dimming	
	Wide viewing angle	SV+AV, DVI, HDMI	



Full-size drawing available on request!