

## CHX1907-X370L0 Chassis Stretched 19" Monitor 1680 x 342

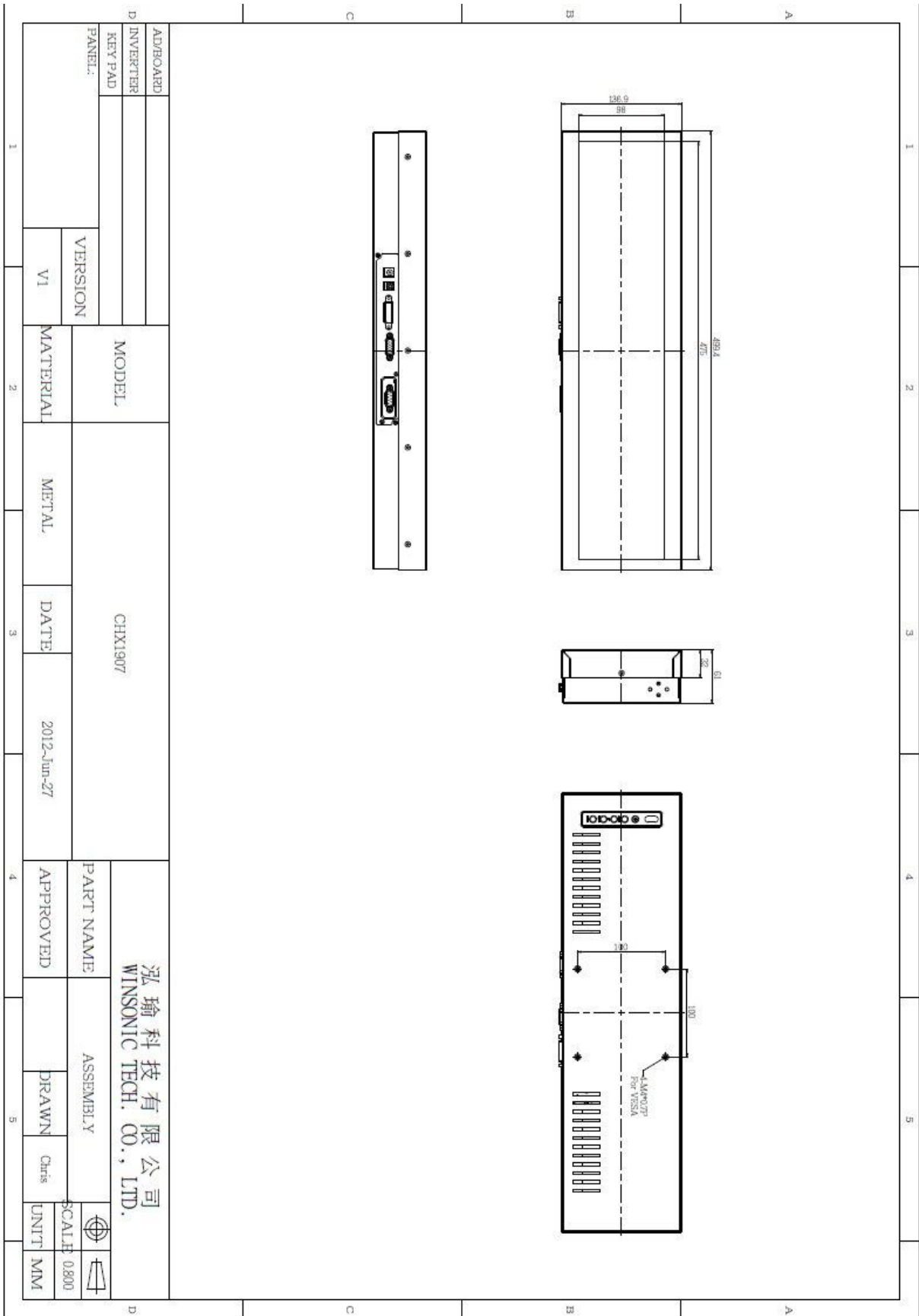
- Modular mechanical design provides flexible product configuration and easy maintenance
- Built-in cooling fans allow 24/7 operation
- Optional auto-brightness sensor offers application by day and night



### Specifications

<b>Panel:</b>	Cell Type / Glass Surface	TFT LCD / Black Anti-Glare, low reflection coating	
	Size	19" viewable diagonal area	
	Active Area / Pixel Pitch	473.76 (H) x 96.44 (V) / 0.282(H) x 0.282(V) mm	
	Native Res. / Colors	1680 (H) x 342 (V) / 16.7 Million	
	Brightness / Contrast	700 cd/m <sup>2</sup> (typ) / 2000:1	
	Response Time	< 8 ms	
	Viewing Angle	H. 178° (-89° ~ + 89°), V. 178° (-89° ~+ 89°)	
	Light Source	LED, Long Life 35.000 hrs (typ)	
	<b>Input Sources:</b>	Audio System	2W Amplifier
<b>Input Terminals:</b>	1 x VGA (15 Pin Female D-SUB) 1x PC Audio (Stereo headphone Jack) 1 x DC Power Plug		
<b>Convenient Features:</b>	Auto Calibration, Back Light Adjustment, Plug & Play (VESA DDC/CI, DDC 2B) OSD Multi Languages, Wall Mount Ready (VESA 100 x 100 mm )		
<b>Power:</b>	12VDC Internal. Ext. power supply with universal / Auto-Sensing, AC 90 to 260 V, 50/60 Hz		
<b>Power cons.</b>	Operation / Power	30 watt, < 2 watt (Support DPMS)	
<b>Operating Temp.:</b>	Temperature / Humidity	0°C ~ 50°C, 10% ~ 90% (no condensation)	
<b>Storage Temp.:</b>	Temperature / Humidity	-20°C ~ 60°C, 10% ~ 90% (no condensation)	
<b>Dimensions:</b>	Physical	With Flanges: see drawing Without Flanges: see drawing	
	Carton	WxHxD = TBD	
<b>Weight:</b>	N.W. / G.W	3 kg / 4 kg	
<b>Options:</b>	<b>Input Signal</b> SV + AV	<b>Enhanced Panel</b> Protection Glass	<b>Others</b> Digital Signage Motion Sensor Light Sensor Auto-Dimming

Errors and omissions excepted.



**Full-size drawing available on request**