

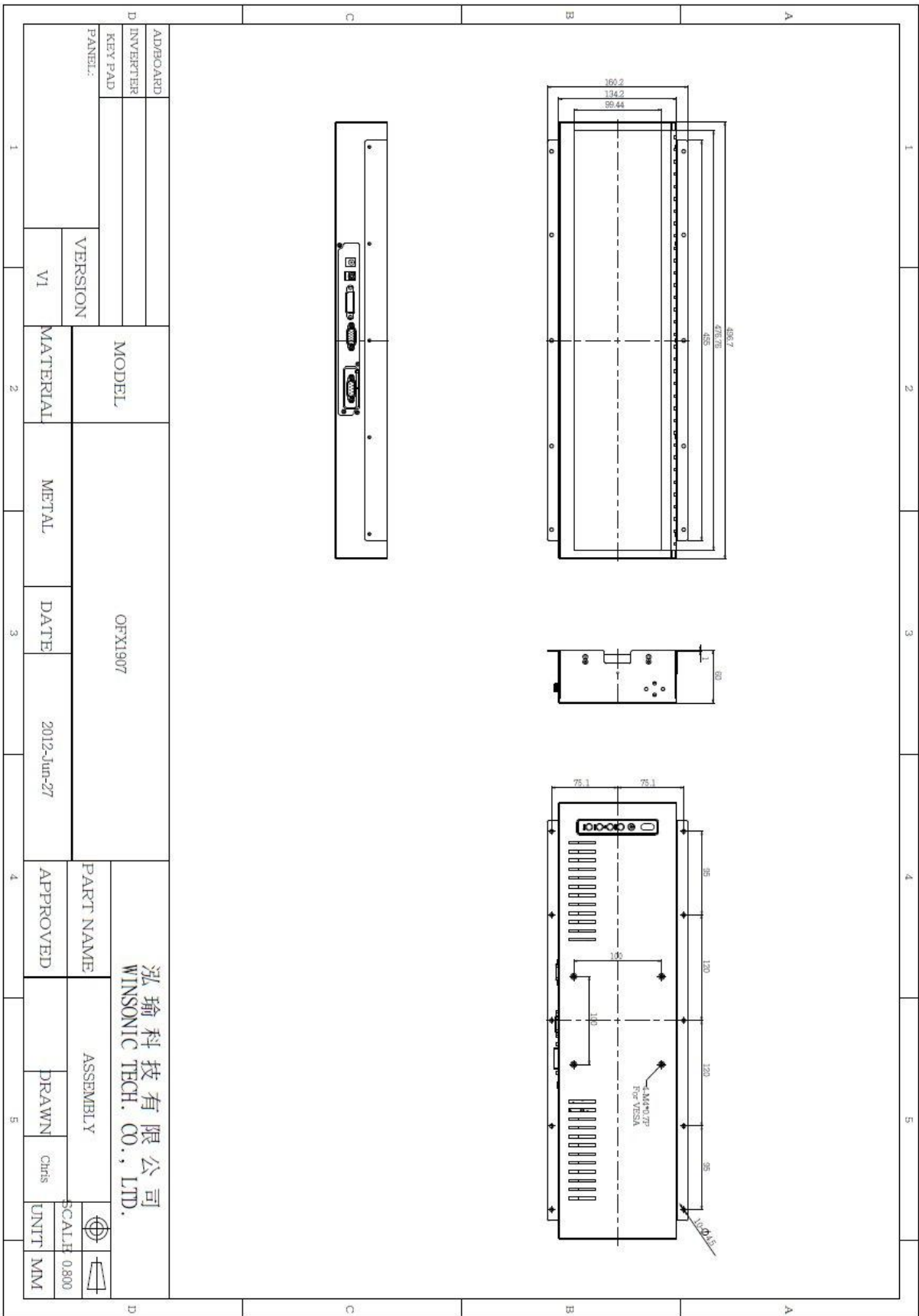
OFX1907-X330L0 Open-Frame Stretched 19" Monitor 1680 x 342

- **Modular mechanical design provides flexible product configuration and easy maintenance**
- **Built-in cooling fans allow 24/7 operation**
- **Optional auto-brightness sensor offers application by day and night**



Specifications			
Panel:	Cell Type / Glass Surface	TFT LCD / Black Anti-Glare, low reflection coating	
	Size	19" viewable diagonal area	
	Active Area / Pixel Pitch	473.76 (H) x 96.44 (V) / 0.282(H) x 0.282(V) mm	
	Native Res. / Colors	1680 (H) x 342 (V) / 16.7 Million	
	Brightness / Contrast	300 cd/m ² (typ) / 2000:1	
	Response Time	< 8 ms	
	Viewing Angle	H. 178° (-89° ~ + 89°), V. 178° (-89° ~+ 89°)	
	Light Source	LED, Long Life 35.000 hrs (typ)	
Input Sources:	Audio System	2W Amplifier	
Input Terminals:	1 x VGA (15 Pin Female D-SUB) 1x PC Audio (Stereo headphone Jack) 1 x DC Power Plug		
Convenient Features:	Auto Calibration, Back Light Adjustment, Plug & Play (VESA DDC/CI, DDC 2B) OSD Multi Languages, Wall Mount Ready (VESA 100 x 100 mm)		
Power:	12VDC Internal. Ext. power supply with universal / Auto-Sensing, AC 90 to 260 V, 50/60 Hz		
Power cons.	Operation / Power	30 watt, < 2 watt (Support DPMS)	
Operating Temp.:	Temperature / Humidity	0°C ~ 50°C, 10% ~ 90% (no condensation)	
Storage Temp.:	Temperature / Humidity	-20°C ~ 60°C, 10% ~ 90% (no condensation)	
Dimensions:	Physical	With Flanges: see drawing	
		Without Flanges: see drawing	
	Carton	WxHxD = TBD	
Weight:	N.W. / G.W	3 kg / 4 kg	
Options:	Input Signal SV + AV	Enhanced Panel	Others Digital Signage Motion Sensor Light Sensor Auto-Dimming
		Protection Glass	

Errors and omissions excepted.



Full-size drawing available on request

TecSys GmbH • Karl-Theodor-Str. 70 • D- 80803 München • Tel +49 89 321 990-14 • www.tecsys.de