

ZPM215A(8)-WH25L2 Zero-Bezel Panel-Mount 21,5" Monitor 1920x1080

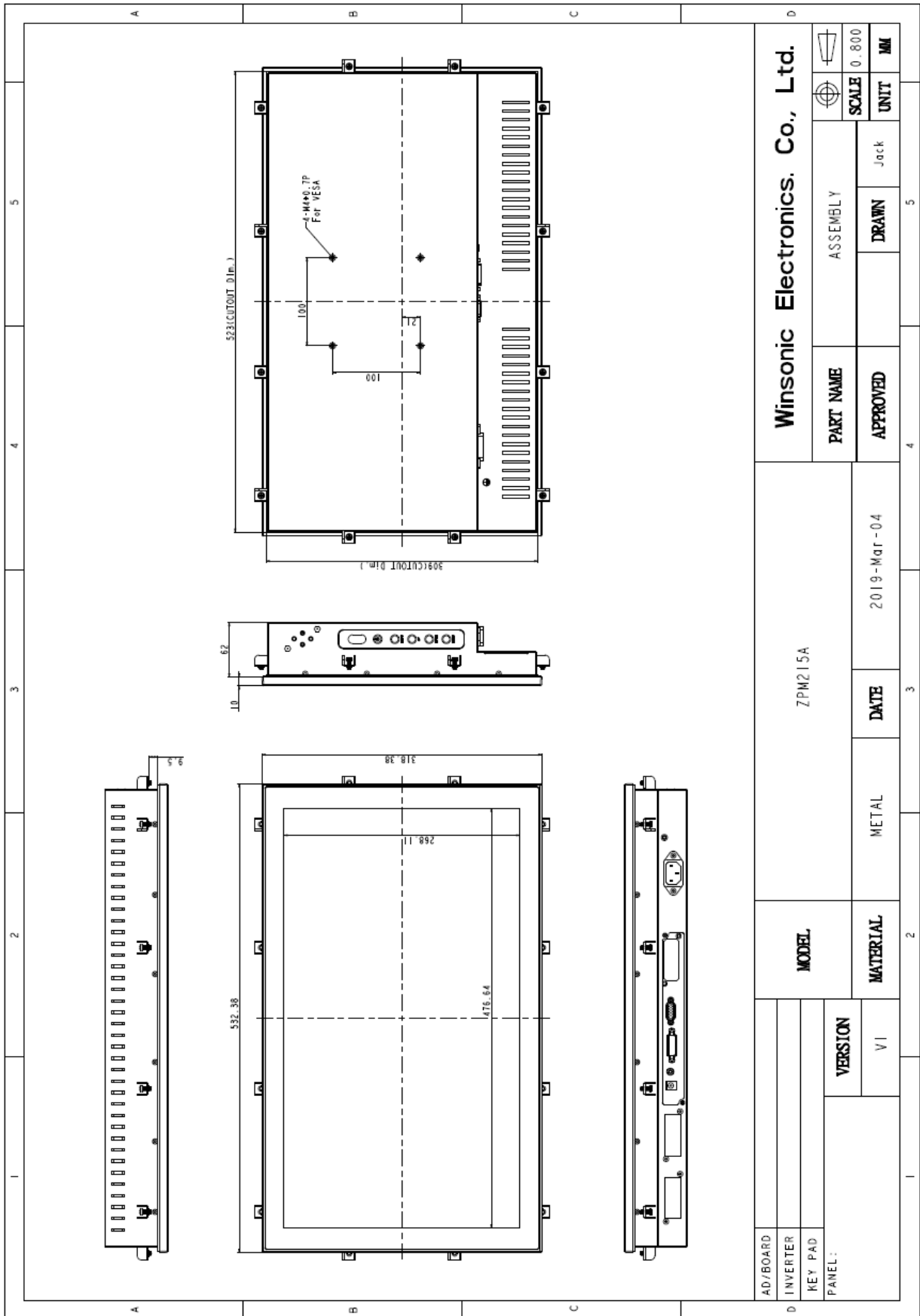
- **Modular mechanical design provides flexible product configuration and easy maintenance**
- **Optional built-in touch screen for interactive applications**
- **Optional auto-brightness sensor offers application by day and night**
- **Optional signal inputs**
- **Optional Media-Player**



Specifications

Panel:	Cell Type / Glass Surface	TFT LCD / Black Anti-Glare, low reflection coating	
	Aspect Ratio / Size	Wide / 21.5" viewable diagonal area	
	Active Area / Pixel Pitch	476.64 (H) x 268.11 (V) mm / 0.248 (H) x 0.248 (V) mm	
	Native Res. / Colors	1920 (H) x 1080 (V) / 16.7M	
	Brightness / Contrast	250 cd/m ² (typ) / 3000:1	
	Response Time	< 25 ms	
	Viewing Angle	Horiz. 178° (-89° ~ + 89°), Vert. 178° (-89° ~+ 89°)	
	Light Source	LED, Long Life 35.000 hrs (typ)	
Input Sources:	Audio System	2W Speaker x 2	
Input Terminals:	1 x VGA (Standard) 1x PC Audio (Stereo headphone Jack) 1 x DC Power Plug		
Convenient Features:	Auto Calibration, Back Light Adjustment, Plug & Play (VESA DDC/CI, DDC 2B) OSD Multi Languages, Wall Mount Ready (VESA see drawing)		
Power:	Internal PSU 90 VAC ~ 260 VAC 50/60 Hz		
Power cons.	Operation / Powersaving	9 watt / < 1 watt (Support DPMS)	
Operating Temp.:	Temperature / Humidity	0°C ~ 50°C, 10% ~ 90% (no condensation)	
Storage Temp.:	Temperature / Humidity	-20°C ~ 60°C, 10% ~ 90% (no condensation)	
Dimensions:	Physical	See drawing	
	Carton	WxHxD = TBD	
Weight:	N.W. / G.W	8 kg / 9 kg	
Options:	Touch	Enhanced Panel	Others
	Resistive Touch Capacitive Touch	High Brightness Wide Temperature Wide angle Protection Glass	Digital Signage Motion Sensor Light Sensor Auto-Dimming SV+AV, DVI, HDMI, DP etc.

Errors and omissions excepted



Full-size drawing available on request